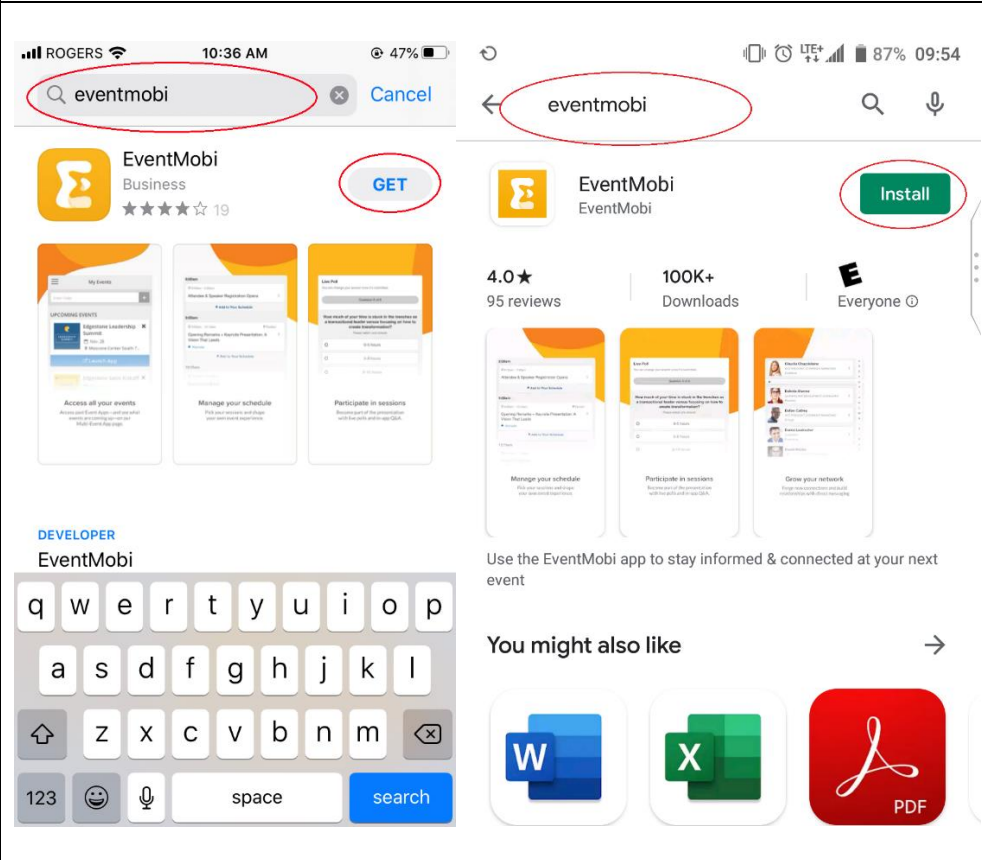
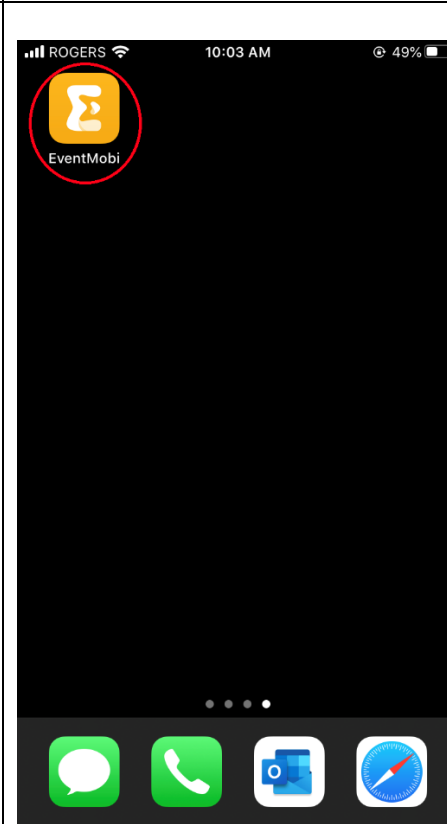


How do I install the Native App? The native app is only available for Apple IOS and Google Android.

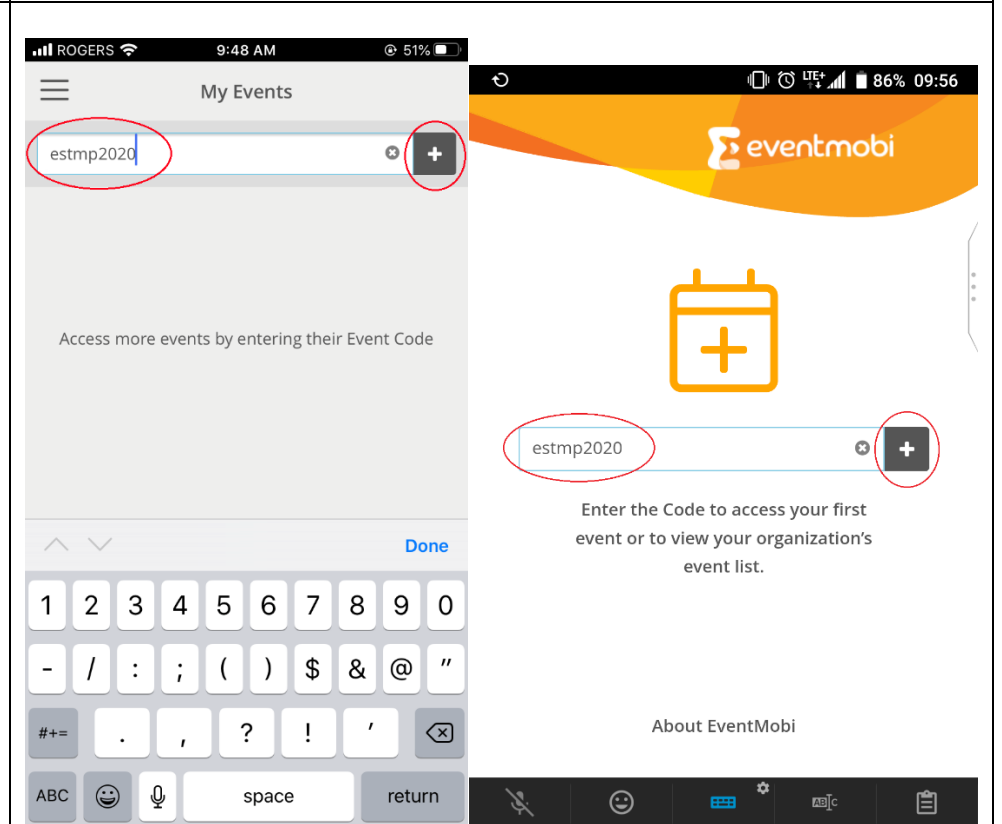
- 1) Go to the App Store or Google Play
Search "eventmobi"
Click download



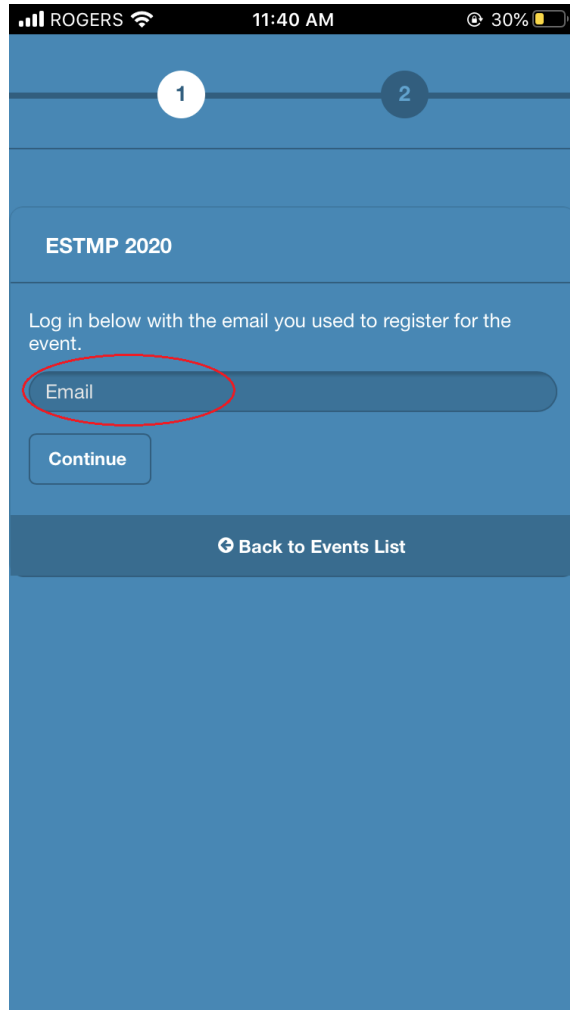
- 2) Open the App on your Phone



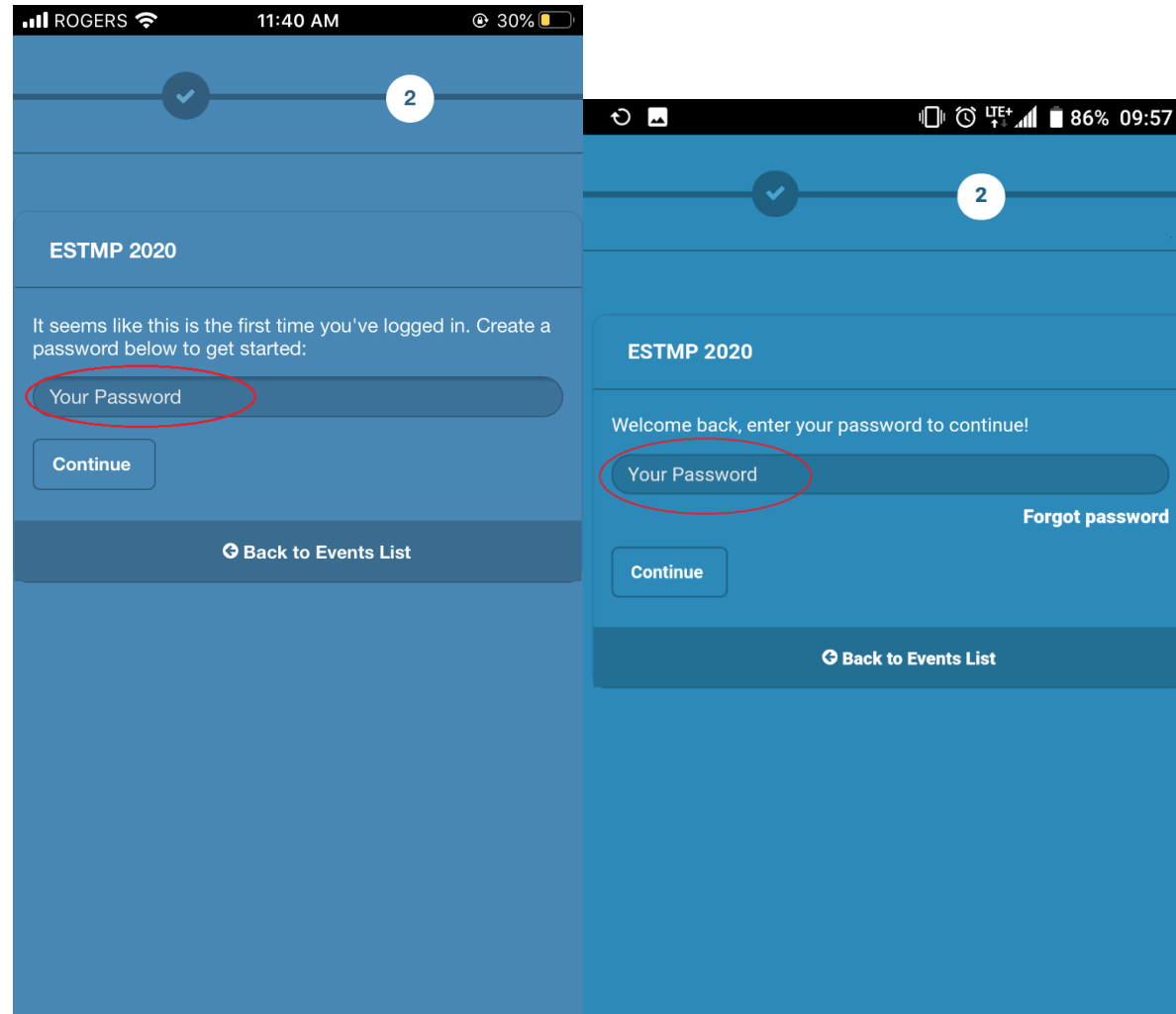
- 3) Enter the event code: **estmp2020**
Click on the +



4) Enter the email you used to register



5) Create (first time) or enter your password



6) Select the app from your list of events
After you launch it the first time it can be used offline

