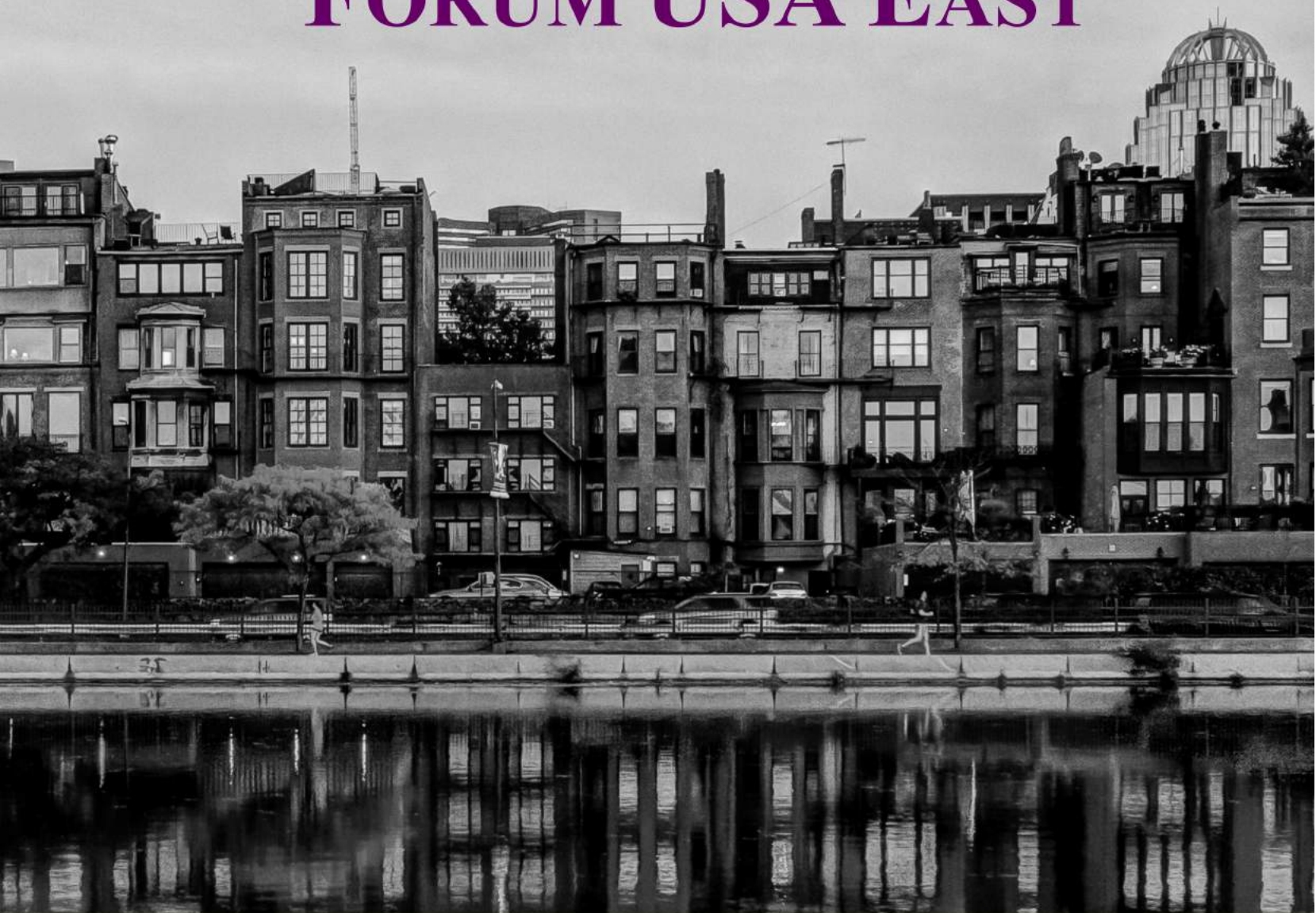


IEEE WOMEN IN ENGINEERING FORUM USA EAST



1-3 December 2016
Boston, MA



IEEE★USA

PLANNING COMMITTEE



Forum Chair
Denise Griffin
*Engagement Analyst at
FirstFuel Software*



Co-Chair & Treasurer
Charles Rubenstein
*Professor at Pratt
Institute*



Registration Chair
Felicia Harlow
*Engineer at Air Force
Research Lab*



Program Chair
Nita Patel
*IEEE WIE ILC Founder
& Chair*



Technical Co-Chair
Charlotte Blair
*Lead Application
Engineer for ANSYS*



Technical Co-Chair
Maryam Rahmani
IEEE / WIE Member



Publicity Chair
Ben Wolfram
*President & Co-Founder
at WE Automation*



Career Fair Chair
Nassim Razi
*Principal Engineer at
Stantec Inc*



**Social Media
Coordinator**
Kate McDevitt
IEEE / WIE Member



Social Media
Holly Cyrus
*PM at FAA W. J. Hughes
Tech Center*



**Volunteer
Coordinator**
Marie Tupaj
IEEE / WIE Member



Advisor
Bob Pelligrino
IEEE / WIE Member



Advisor
Kate Duncan
*PI at US Army
Aberdeen Proving
Ground*



Advisor
Vicky Drury
IEEE / WIE Member

Thanks to onsite volunteers: Neeta
Basantkumar, Rhonda Farrell,
Madhuri Marripelly, Maria Salome
Perez, Rasoul Russell Rajaei, Behnaz
Rezaei, and Nadee Seneviratne

SCHEDULE AT A GLANCE

THURSDAY, 1 DECEMBER

03:00 PM – 05:00 PM	REGISTRATION
04:30 PM – 06:30 PM	NETWORKING RECEPTION

FRIDAY, 2 DECEMBER

07:30 AM – 04:00 PM	REGISTRATION
08:00 AM – 09:30 AM	WELCOME BREAKFAST & KEYNOTE
09:30 AM – 10:00 AM	BREAK & EXHIBITS
10:00 AM – 12:05 PM	TRACK 1: INNOVATION
	TRACK 2: LEADERSHIP & INSPIRATION
	TRACK 3: PROFESSIONAL GROWTH
	TRACK 4: POSTER SESSION
12:05 PM – 02:00 PM	LUNCH
02:00 PM – 03:20 PM	TRACK 1: INNOVATION
	TRACK 2: LEADERSHIP & INSPIRATION
	TRACK 3: PROFESSIONAL GROWTH
03:20 PM – 04:00 PM	BREAK & EXHIBITS
04:00 PM – 05:30 PM	KEYNOTES
04:00 PM – 07:00 PM	CAREER FAIR & EXHIBITS

SATURDAY, 3 DECEMBER

07:30 AM – 10:00 AM	REGISTRATION
08:00 AM – 09:30 AM	WELCOME BREAKFAST & KEYNOTE
09:30 AM – 10:45 AM	TRACK 1: INNOVATION
	TRACK 2: LEADERSHIP & INSPIRATION
	TRACK 3: PROFESSIONAL GROWTH
10:45 AM – 11:00 AM	TRANSITION BREAK
11:00 AM – 12:30 PM	KEYNOTES & CLOSING

DETAILED SCHEDULE

THURSDAY, 1 DECEMBER

04:00 PM – 06:00 PM

NETWORKING RECEPTION

WESTMINSTER

PETER ECKSTEIN

2016 IEEE-USA President

FRIDAY, 2 DECEMBER

07:30 AM – 09:00 AM

BREAKFAST

BELVEDERE

08:35 AM – 08:40 AM

RON TABROFF

2016 IEEE Region 1 Director

BELVEDERE

08:40 AM – 08:45 AM

KEVIN FLAVIN

2016 IEEE Boston Chair

BELVEDERE

08:45 AM – 09:30 AM

GRETCHEN MCCLAIN

Board of Director: AMETEK, Inc., Booz Allen Hamilton Holding Corporation, and Boart Longyear Limited

It's the Tension Between our Confidence and Butterflies That Produces Our Greatest Work

BELVEDERE

09:30 AM – 10:00 AM

COFFEE BREAK & EXHIBITS

WESTMINSTER

10:00 AM – 12:00 PM

DEE DEE SMARTT LYNCH

Global Interaction Strategist, Team Coach, and Consultant

Maximizing Team Roles for More Effective Team Performance

FENWAY

POSTER SESSION

WESTMINSTER PRE-FUNCTION

Ariunbolor Purvee

International perspective - work/life balance

Shahnaz Kamberi

Essential Leadership Skills

Ghada Abdelmoumin

Exploring the gender gap (Engagement and Advancement)

Brenda Matthis

Barefoot Engineers, Indigenous Builds and Flow - A Pedagogical Approach for the Selection of Robotics Projects for Pre-Service and In-Service Teachers

Jennifer Legaspi

Advancing Organizations for Underrepresented Groups within Educational Institutions and the Workplace

DETAILED SCHEDULE

FRIDAY, 2 DECEMBER

10:00 AM – 10:35 AM

SARAH OSTADABBAS

Assistant Professor, Northeastern University

Big Data & Healthcare

MAVERICK A

AMORY WAKEFIELD

Director of Product, True Fit Corporation

Sound Confident, but not too Harsh: Effective Communication for Women in Leadership

MAVERICK B

10:45 AM – 11:20 AM

FAITH DAVIS

Founder and Director of Innovation & Technology, DAF Technologies

Don't Miss Out on the Next Technical Revolution

MAVERICK A

ANDY MOYSENKO

Owner, Advyse

The Professional Career – A Manageable Process

MAVERICK B

11:30 AM – 12:05 PM

GEETIKA TANDON

Senior Technical Advisor/Technical Director, SRA International

Fostering Innovation: Techniques and Tools

MAVERICK A

REENA DAHLE

Assistant Professor, Electrical Engineering, New Paltz, State University of New York

Major in Engineering, Minor in Art: A New Approach to Retaining Females in Engineering

MAVERICK B

12:05 PM – 02:00 PM

LUNCH

BELVEDERE

TAKAKO HASHIMOTO

2016 IEEE WIE Chair

KAREN PEDERSEN

2016 IEEE-USA President-Elect

BARRY SHOOP

2016 IEEE President

KAREN BARTLESON

2016 IEEE President-Elect/2017 IEEE President

DETAILED SCHEDULE

FRIDAY, 2 DECEMBER

02:00 PM – 03:45 PM

BARBARA TAYLOR & DAVE PALMER

FENWAY

Partner, JanBara & Associates & CEO, Incyte Strategies LLC

X VS. Y: Overcoming Gender Bias on Your Way to the C-Suite

02:00 PM – 02:35 PM

MARIA DEMAREE

MAVERICK A

Vice President, Ground Systems and Solutions, Lockheed Martin Space Systems Company

Success Strategies for Women in the Workplace

STACY ROOPNARINE

MAVERICK B

Government Minister of State, and former elected Member of Parliament in the Republic of Trinidad and Tobago

Increasing Equity in Power and Decision Making

02:45 PM – 03:20 PM

CHRISTINA KAYASTHA

MAVERICK A

Senior Software Engineer, Vistaprint

Fostering Growth and Innovation through Community and Competition

PANEL: TALES OF MENTORING SUCCESSES AND FAILURES

MAVERICK B

Sarah Lyons

Advisory Systems Engineer, RADAR Systems Engineering, Northrop Grumman

Danita Mitchell

Department Manager – AST Mission Solutions, Raytheon

Jungnam Pleasant

Embedded Systems Software Engineer, Northrop Grumman

03:20 PM – 04:00 PM

COFFEE BREAK & EXHIBITS

WESTMINSTER

04:00 PM – 07:00 PM

CAREER FAIR & EXHIBITS

WESTMINSTER

04:00 PM – 04:45 PM

SUSAN RAYMON

BELVEDERE

Rockwell Automation

How to Conquer Roadblocks & Manage Difficult Conversations

04:45 PM – 05:15 PM

FIRESIDE CHAT

BELVEDERE

Heidi Hemmer

Vice President, Network, Verizon

Maryam Rahmani

Graduate Student, UMUC

05:15 PM – 05:30 PM

DENISE GRIFFIN & CHARLES RUBENSTEIN

IEEE WIE Forum USA East Chair & Co-Chair

DETAILED SCHEDULE

SATURDAY, 3 DECEMBER

07:30 AM – 09:00 AM

BREAKFAST

BELVEDERE

08:20 AM – 08:25 AM

TIM KURZWEG

2016 IEEE Region 2 Director

BELVEDERE

08:30 AM – 09:15 AM

PANEL: WOMEN IN LEADERSHIP – OPPORTUNITIES TO LEAD

BELVEDERE

Pamela Goldberg

Former CEO, Mass Tech Collaborative

Liz Borowsky

Senior Director of Technology Mapping, Akamai Technologies

Ginamaria Espinoza-Garcia

Design Engineering Director, Sensata Technologies

Nita Patel (moderator)

IEEE WIE ILC Founder & Chair

09:30 AM – 10:45 AM

MANASI KAKADE

Career Strategist & Communication Coach

7 Steps to Building a Stellar LinkedIn Profile

FENWAY

09:30 AM – 10:05 AM

MAURA K. MORAN

IEEE-USA's Vice President for Government Relations & Partner, Cambridge Technology Law LLC

Beyond Networking 101

MAVERICK A

KEMI SORINMADE

Leadership Trainer, Speaker & Coach, The Growth Studio

The Leadership Advantage: Raising your Influence, Driving Results, and Making an Impact as a Female Leader

MAVERICK B

10:15 AM – 10:45 AM

DANA VOLL, KATHERINE CZERNIEJEWSKI & JULIE FETZER

Co-Founders, TINKER

From Concept to Reality: TINKER makes its way across campuses

MAVERICK A

CAROLYN C. MATHEUS

Associate Professor of Information Systems, Marist College

From Problems through Prosperity: Learning to Lead with Passion and Purpose

MAVERICK B

10:45 AM – 11:00 AM

COFFEE BREAK & EXHIBITS

WESTMINSTER

11:00 AM – 11:30 AM

DEBRA GOLDFARB

Chief Analyst and Senior Director of Market Intelligence, Intel

Lessons Learned

BELVEDERE

11:30 AM – 12:30 PM

CLOSING SESSION

BELVEDERE

THANKS TO OUR PATRONS!

Platinum Plus

Rockwell
Automation

LISTEN.
THINK.
SOLVE.®



Diversity is Good Business at Rockwell Automation

By diversifying our work force and our supply chain, we gain access to new sources of expertise and experience while contributing to the economic growth of communities where we do business. At Rockwell Automation, we view diversity as a powerful tool for achieving our business objectives.

Come join us at Rockwell Automation
www.rockwellautomation.com/careers

**Rockwell
Automation**

 **Allen-Bradley • Rockwell Software**

THANKS TO OUR PATRONS!

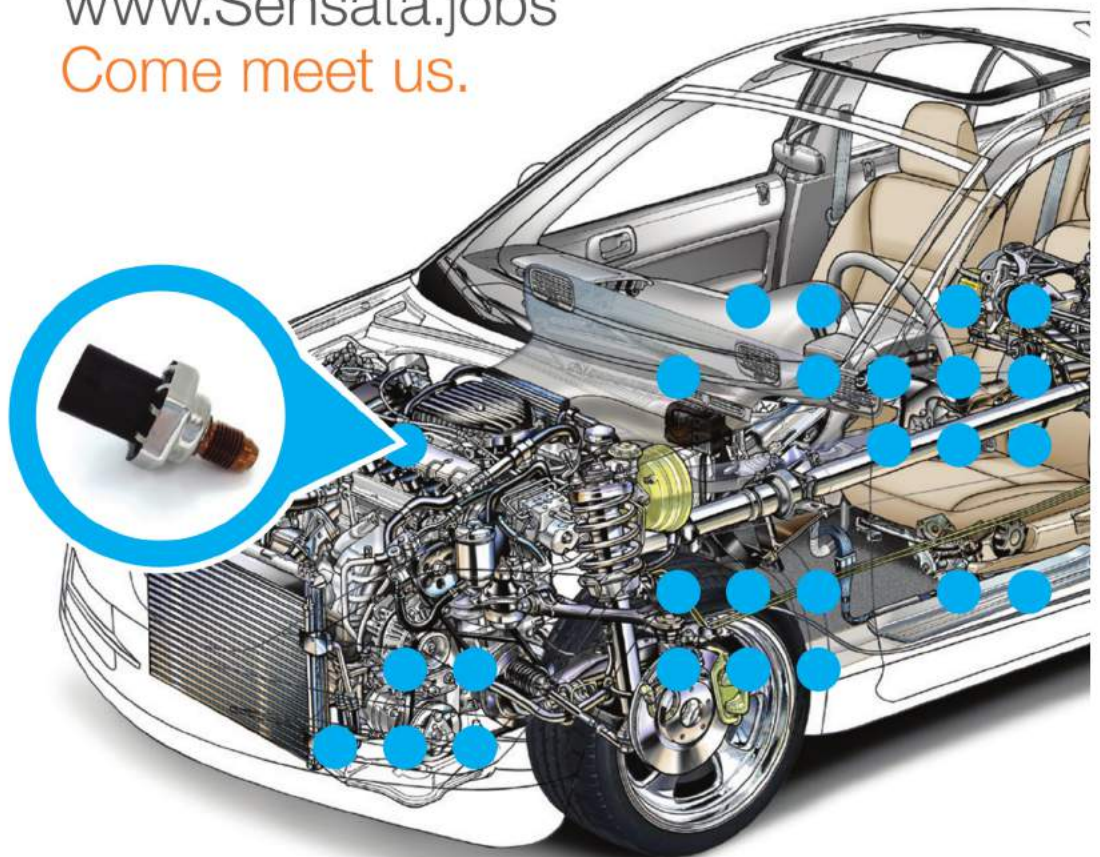
Silver Patron



1916 • 100 YEARS • 2016

Your future can make a difference.

www.Sensata.jobs
Come meet us.



Sensata
Technologies

THANKS TO OUR PATRONS!

Silver Patron



AMETEK salutes our board member,
Gretchen McClain,
for inspiring female leaders in Engineering

AMETEK is a global diversified manufacturer of electronic instruments and electromechanical devices.



www.ametek.com



THANKS TO OUR PATRONS!

Silver Patron



ADVANCE YOUR CAREER WITH THE MAKERS OF MATLAB AND SIMULINK

MathWorks is the company that develops MATLAB® and Simulink® – the software that transforms the way engineers and scientists think and work.

We hire smart people who want to make a difference.

Apply today: mathworks.com/jobs



THANKS TO OUR PATRONS!

Bronze Patrons



If you've ever seen a rocket launch, flown on an airplane, driven a car, used a computer, touched a mobile device, crossed a bridge, or put on wearable technology, chances are you've used a product where ANSYS software played a critical role in its creation. ANSYS is the global leader in engineering simulation. We help the world's most innovative companies deliver radically better products to their customers. By offering the best and broadest portfolio of engineering simulation software, we help them solve the most complex design challenges and engineer products limited only by imagination.

Northeastern University

As a university where teaching and research are grounded in global engagement, Northeastern's impact is being felt in all corners of the world. Our students shape the world through experiential learning opportunities for work, research, study, and service with more than 3,000 partners in the United States, in 131 countries and on all seven continents; and through the diversity of a dynamic campus that connects students from 138 countries, all engaged in the exchange of ideas and the common pursuit of academic, cultural, and professional experience and enterprise.

**IEEE WIE Forum USA East is sponsored by
IEEE WIE, IEEE-USA, IEEE Region 1,
IEEE Region 2 and IEEE Boston Section**

THANKS TO OUR PATRONS!

Career Fair Patrons



charles river analytics

Charles River Analytics is a provider of innovative R&D solutions for increasingly complex and important human-systems challenges. For over 30 years, we have been applying computational intelligence technologies to develop tools and solutions to transform our customers' data into knowledge that drives accurate assessment and robust decision-making. We continue to grow through R&D programs for the DoD and the Intelligence Community, addressing a broad spectrum of domains, including: sensor and image processing, situation assessment and decision aiding, human systems integration, and cyber analytics.

We offer competitive compensation plus bonus with an attractive benefits package including: up to 90% employer-paid medical and 100% employer-paid dental, vision, life and disability insurance, profit sharing, paid maternity/paternity leave, tuition reimbursement, monthly gym allowance, free parking, generous paid time off, and a casual environment.



The Institution for Engineering and Technology, The IET, is an IEEE sister society based in the UK that provides a professional home for life for engineers and technicians.

Working to engineer a better world with a heritage dating back to 1871, the IET's mission is to inspire, inform and influence the global engineering community, supporting technology innovation to meet the needs of society. IET does this through thought leadership, safeguarding professional standards, delivering world class knowledge products and services, recognizing and promoting excellence and inspiring the next generation for all engineers and technologists.

THANKS TO OUR PATRONS!

Career Fair Patrons



Eversource Energy, a Fortune 500 and Standard & Poor's 500 energy company based in Connecticut, Massachusetts and New Hampshire, operates New England's largest energy delivery system. Eversource is committed to safety, reliability, environmental leadership and stewardship, and expanding energy options for our 3.6 million electricity and natural gas customers.

2015 was a very successful year for Eversource Energy. Eversource invested the most dollars ever in New England's energy delivery systems, achieved our best ever level of electric service reliability, connected record numbers of new natural gas heating customers, posted very strong financial results, and made significant progress in addressing the region's energy infrastructure challenges.

Check out our jobs at www.eversource.com



Since 1921, now with offices in 18 cities in the US and Canada, LTK Engineering has a staff of over 370 that includes more than 280 engineers and other professionals with expertise in all areas of passenger rail.

LTK has participated in the planning, design and development of nearly every rail transit system in North America, providing unmatched technical expertise and managerial capabilities in:

- **Rail Vehicle Engineering**
- **Rail Systems Engineering, including**
 - Traction Power, OCS
 - Signaling and train control
 - Communications systems and supervisory control
 - Rail systems integration
 - Rail maintenance facilities
- **Revenue Systems and Technology**
- **Operations Planning and Simulation**

THANKS TO OUR PATRONS!

Career Fair Patrons



National Grid (LSE: NG; NYSE:NGG) is an international electricity and gas company and one of the largest investor-owned energy companies in the world. We play a vital role in delivering gas and electricity to many millions of people across Great Britain and northeastern US in an efficient, reliable and safe manner. We are committed to safeguarding our global environment for future generations and providing all our customers with the highest standards of service through investment in our networks and through our talented, diverse workforce. National Grid is offering excellent career and growth opportunities. We are not just growing fast; we are growing smart - and we want you to come grow with us!



OSRAM, based in Munich and with headquarters for the Americas region located in Wilmington, Massachusetts, is a global leading lighting manufacturer with a history dating back more than 100 years. OSRAM's product portfolio includes high-tech applications based on semiconductor technology such as infrared or laser lighting, as well as products used in highly diverse applications ranging from virtual reality, autonomous driving, mobile phones as well as smart and connected lighting solutions in buildings and cities. In automotive lighting, OSRAM is the global market and technology leader.



United Technologies

A leader in the global building systems and aerospace industries, United Technologies Corporation (UTC) invents new and better ways to keep people safe, comfortable, productive and on the move. By combining a passion for science with precision engineering, we create the smart, sustainable solutions the world needs.

Our commercial businesses include Otis elevators and escalators and UTC Climate, Controls & Security, a leading provider of heating, ventilation, air conditioning, fire and security systems, and building automation and controls. Our aerospace businesses include Pratt & Whitney aircraft engines and UTC Aerospace Systems. UTC also operates a central research organization.

NOTES

FORUM SPEAKERS



Ghada Abdelmoumin

Associate Professor of Information Technology, Northern Virginia Community College

Ghada Abdelmoumin is an associate professor of information technology at Northern Virginia Community College. She received a Bachelor of Science degree in mechanical power engineering from Alexandria University, a public research institution that is the second largest university in Egypt. She earned two Master of Science degrees, one in computer science from Western Illinois University and the other in computer science and applications from Virginia Tech. Abdelmoumin has broad experience teaching in public schools, colleges and universities in the US. She has worked in the Fairfax County Public School System as a special education instructional assistant and substitute teacher, served as a visiting professor at DeVry University, a faculty lead and faculty advisor at Stratford University. She started her career in higher education in 2009 by serving as an adjunct faculty with DeVry University and Northern Virginia Community College. In 2014 representing Stratford University School of Computer Science and Information Technology, Abdelmoumin received the Teacher of the Year award from the Virginia Career College Association. She also has professional experience as a senior design engineer at Global Link Solutions, Inc. She is a member of the Institute of Electrical and Electronics Engineers, the Association for Computing Machinery and the VMware User Group. Her professional interests have focused on cloud computing, mobile computing, software engineering and cybersecurity. She likes to work in the areas of mobile and cloud computing where she hopes to use digital technology to transform the economics of societies in regions ravaged by conflict and war.



Liz Borowsky

Senior Director of Technology Mapping, Akamai Technologies

Liz Borowsky is a Senior Director of Engineering at Akamai Technologies, one of the world's largest Internet infrastructure companies. As head of the Platform Mapping department, she is in charge of the secret sauce at the core of Akamai's Intelligent Platform. Her team runs the software that controls the traffic on Akamai's worldwide distributed network, routing roughly twenty-five percent of all internet traffic daily. Liz has PhD and MS degrees in Computer Science from UCLA, and a BA in Mathematics from Williams College. She has tried the three major models of "What to do with a PhD in Computer Science?" having worked in an Industrial Research Lab, as a Professor, and in Industry. In Industry she has had roles as an individual contributor, starting as a software engineer, and in management up to her current role as Senior Director. Throughout her career the common thread tying these roles together is a focus on solving problems of optimization and coordination in distributed systems. She loves thinking about how pieces of a system with different characteristics can be made to work efficiently together. She currently applies this skill to both the technical and people management aspects of her role.



Katherine Czerniejewski

Co-Founders, TINKER

Katherine Czerniejewski, Julie Fetzer, and Dana Voll are the founders of TINKER: an organization that establishes engineering programs for high school girls on university campuses. Originally founded in 2015 as a single one-week summer camp at SUNY Buffalo, TINKER has since been established as an annual program and expanded to multiple universities. TINKER is designed to break down the barriers and stereotypes that often prevent young women from pursuing careers in STEM through mentorship and empowerment. Czerniejewski received her BS in Biomedical Engineering and BA in Mathematics from SUNY Buffalo in May 2016 and is currently obtaining her MSE at Johns Hopkins University in Bioengineering. Fetzer is pursuing a double major in Civil Engineering and Industrial Engineering at SUNY Buffalo and will graduate with her BS in Spring 2017. Voll graduated with a BS in Electrical Engineering in May 2016 and currently works for Northrop Grumman in Baltimore.

FORUM SPEAKERS



Reena Dahle

Assistant Professor, Electrical Engineering, New Paltz, State University of New York

Reena Dahle is currently an Assistant Professor in Electrical Engineering at the Division of Engineering Programs at the State University of New York (SUNY) New Paltz. She received her Ph.D. from the University of Waterloo, Ontario, Canada in the area of microwave microelectromechanical systems (MEMS). She has also worked at L3 MITEQ as a senior microwave systems engineer overseeing the design of high-performance components and systems for satellite communication and earth systems. Her research interests include biomedical wireless sensing, RF energy harvesting and 3-D printed microwave components. She is also the founder of the group, Women In Science and Engineering (W.I.S.E.) at SUNY New Paltz, a group geared toward growing the number of women in STEM using novel methods to engaging females from K-12, through university to industry including social networking, summer camps, and minor programs. For more information about this group, please visit: <http://wisenewpaltz.wixsite.com/npwise>.



Faith Davis

Founder and Director of Innovation & Technology, DAF Technologies

Faith Davis is the Director of Innovation & Technology at DAF Technologies, a technology consulting firm that partners with enterprises looking to maintain their market position and not get outmaneuvered as a result of new technologies. We assess and discover specific opportunities in our clients businesses to innovate, research and identify best in class technologies, create community through connections with thought leaders, prototype, and analyze the results. She also works with Howard University professors and alumni to promote STEM based entrepreneurship and innovation. She is a reviewer of early stage startup funding applications and a loaned executive to help startups reach their next significant milestone with Maryland Technology Development Corporation (TEDCO). She has published several technical papers and has been a speaker at technical conferences, technology focus days, commencements, women's conferences, and affinity group meetings. Faith was honored to be the 2015 Commencement Speaker for Howard University College of Engineering, Architecture, and Computer Science. Davis earned a B.S., summa cum laude, from Howard University and a M.S. from Stanford University in Electrical Engineering.



Maria Demaree

Vice President, Ground Systems and Solutions, Lockheed Martin Space Systems Company

Maria Demaree is the vice president of Engineering for Ground Systems and Solutions at Lockheed Martin Space Systems. In this role, Maria is responsible for the matrix management and leadership of 4,300 engineers, technologists and software developers who serve a range of programs from satellite ground systems to detailed mission analytics. Since joining Lockheed Martin in 1990, she has held many leadership positions in program management, engineering management, strategic planning and systems engineering. Maria has a Bachelor's degree in Computer Science from Pennsylvania State University and Master's degree in Systems Engineering from the University of Pennsylvania. She is active in her community, serving as lead for the Junior League of Northern Virginia JamPacks project, which has delivered over 2,500 backpacks to underprivileged children in Fairfax and Loudoun counties. Maria is actively involved in multiple STEM initiatives in schools, scouting and Take Your Child to Work events. Recognized for her work in the community, Maria received the March of Dimes Heroines in Technology Lifetime Achievement award in 2002.

FORUM SPEAKERS



Ginamaria Espinoza-Garcia

Design Engineering Director, Sensata Technologies

Design Engineering Director, Sensata Technologies, Jan 2016-Present
Responsible for Operator Sensor Technology (OST) product line at Sensata Shakopee, formerly DeltaTech. Including leadership of our Mechanical, Electrical, and Software functions as well as partnership with our Berlin sister site. Design Engineering Manager, Sensata Technologies, September 2009- Jan 2016. Helped drive the business to >\$70M in net revenue in 2013. In 2014, as HVOR was carved out as a separate BU, I took responsibility for MEMS and MSG design teams executing on NPD's including mHCM, Scania P+T, CAT CPoS, and INTEGR. Simultaneously, I held the MEMS Design COE. Mechanical Design Engineer, Sensata Technologies, 2002-2009. Resident Engineer at GM, design support for Pressure Switch Manifold (PSM). Played a key role in the launch of the Bosch X15/X22. After 4 years, I joined the MEMS team and was responsible for the DPS launch at Caterpillar, design and launch of the dual DPS sensor for Cummins, as well as multiple cost reductions including PBT and NiPhos plating.



Julie Fetzer

Co-Founders, TINKER

Katherine Czerniejewski, Julie Fetzer, and Dana Voll are the founders of TINKER: an organization that establishes engineering programs for high school girls on university campuses. Originally founded in 2015 as a single one-week summer camp at SUNY Buffalo, TINKER has since been established as an annual program and expanded to multiple universities. TINKER is designed to break down the barriers and stereotypes that often prevent young women from pursuing careers in STEM through mentorship and empowerment. Czerniejewski received her BS in Biomedical Engineering and BA in Mathematics from SUNY Buffalo in May 2016 and is currently obtaining her MSE at Johns Hopkins University in Bioengineering. Fetzer is pursuing a double major in Civil Engineering and Industrial Engineering at SUNY Buffalo and will graduate with her BS in Spring 2017. Voll graduated with a BS in Electrical Engineering in May 2016 and currently works for Northrop Grumman in Baltimore.



Pamela Goldberg

Former CEO, Mass Tech Collaborative

For the past five years, Pamela Goldberg was CEO of the Massachusetts Technology Collaborative, a public economic development engine charged with catalyzing technology innovation throughout the Commonwealth. An experienced leader, Goldberg has an extensive background in entrepreneurship, innovation and finance, and was the first woman to lead the agency in its nearly 30 year history. Goldberg worked closely with the Massachusetts Governor and Legislature to support critical economic development initiatives that unlock private investment and create jobs for Massachusetts residents. The Massachusetts Technology Collaborative is currently advancing technology-based solutions that improve the health care system, expand high-speed Internet access and strengthen the growth and development of the state's technology sector with specific focus on digital health, data analytics, robotics, and cybersecurity. Passionate about innovation and entrepreneurship, Goldberg most recently served as the Director of The Center for Entrepreneurial Leadership at Tufts University. Goldberg received her BA from Tufts University and MBA from Stanford University. She resides in Wellesley.

FORUM SPEAKERS



Debra Goldfarb

Chief Analyst and Senior Director of Market Intelligence, Intel

Debra is the Chief Analyst and Senior Director of Market Intelligence for Intel's Data Center Group. Debra's nearly 30 year career in High Performance Computing started at IDC where she spent 17 years leading the company's presence in high end computing in government, academia and industry. She was instrumental in driving science and technology policy initiatives in the US and abroad, highlighting the impact and importance of HPC as a fundamental economic and innovation driver. She led IDG's initiatives in healthcare and life sciences, launching Bio-IT World magazine and Expo, the Life Sciences Venture Fund and a research advisory and consultancy. She is actively involved in STEM policy initiatives and in working with global organizations to advance economic development through access and use of leading edge technologies. Outside of Intel Debra is active in the community sitting on several boards. She is a devoted mom and an avid skier.



Heidi Hemmer

Vice President, Network, Verizon

Heidi Hemmer is the vice president – Network for Verizon. She is responsible for Capital Administration, Asset Management, and Vendor Management for Network in both Wireless and Wireline. Previously, Heidi was Vice President – Global Strategic Sourcing at Verizon Communications, where she was responsible for sourcing activities across multiple categories totaling approximately \$30B annually. She was also responsible for providing strategies and processes for Network Equipment Supply Chain. Heidi has over 20 years of experience in the telecommunications industry in both operational field positions as well as staff support roles. Prior to her current position, she was the Network lead responsible for all aspects of migrating and consolidating networks to support the Alltel merger. She also held numerous leadership positions in the Northeast Area Network Department for Wireless including Director of Engineering in both the New York Metro and Philadelphia regions and Director of System Performance in the New York Metro region. Heidi graduated from Duke University with a bachelor's of science degree in Zoology



Manasi Kakade

Career Strategist & Communication Coach

Manasi Kakade is an engineer turned marketer turned entrepreneur. She writes, speaks, and coaches smart, independent minded professionals and solo-preneurs on how to communicate their strengths, ideas, expertise – online and offline – with clarity and confidence so that they attract and grab more career and business opportunities that are just right for them. To find more information about Manasi, visit her blog at ManasiKakade.com.

FORUM SPEAKERS



Shahnaz Kamberi

Design Engineering Director, Sensata Technologies

Dr. Shahnaz Kamberi is currently the Associate Director and Computer Science professor of the School of Computer Science and Information Technology at Stratford University in Woodbridge, Virginia. She has over nine years of experience teaching both undergraduate and graduate level programming courses, onsite and online; with specialty in software engineering, computer programming, and game and simulation design and development. Dr. Kamberi is a member of IGDA, NASAGA, WGI, ISTE, ACM, ACM-W, IEEE and IEEE WIE. She is active in organizations such as the DC Tech Meetup, DC Web Women, DC ACM, Women who Code DC; and the Northern Virginia Technology Council. Dr. Kamberi served as Chair of the Washington DC chapter of the ACM from 2015-2016. Dr. Shahnaz Kamberi is also a STEM outreach professional responsible for focusing on engaging the student in the classroom through new innovative methods. In 2014, Dr. Kamberi was listed as one of the 25 interesting STEM experts worth following on Twitter by Edudemic.com. Dr. Kamberi's dissertation focus was on the use of educational computer games to increase adolescent girls' interest in computer science, and she often volunteers her time to conduct free workshops to expose teen girls to programming. Dr. Shahnaz Kamberi holds a Doctor of Science degree in Computer Science with concentration in Emerging Media from Colorado Technical University, a Master of Science degree in Computer Animation from Bournemouth University and a Bachelor of Science degree in Applied Mathematics from George Mason University. You can keep in touch with Dr. Kamberi via her website at shahnazkamberi.com.



Christina Kayastha

Senior Software Engineer, Vistaprint

Christina Kayastha is a Senior Software Engineer at Vistaprint in Boston USA. She is originally from Nepal, and grew up in Ukraine. She graduated with a BS in Computer Science from the University of Rochester in 2014 where she was the president of the UofR IEEE Chapter. Outside of work Christina is actively involved in the Boston Community: she loves attending meetups, community events, and hackathons and has won several. She has mentored young girls in the STEM field through Technovation, taught programming classes through Girl Develop It, judged robotics and programming competition, and volunteered at local maker spaces. Christina believes that technology should be used as an enabler, and has been involved in accessibility projects. She is a patent holder for inventing technology that enables full page braille eBooks and is passionate about the possibilities of making the web more accessible through this technology. She is currently working on ParkAbler, an app that makes finding accessible parking easier. Christina believes that such innovation is an essential part of our community culture, that anyone can make a difference and that everyone should have the right and access to innovate.



Jennifer Legaspi

Applications Engineer at ON Semiconductor

Jennifer Legaspi has served on several executive and officer boards during her time as a student including her roles as secretary then president of The Alliance (Formerly The Gay Straight Alliance), a group for LGBTQIA+ students and Allies, in addition to her position as secretary of the Outing Club (WPI OC), an outdoors group. During her time as president of Women in Electrical and Computer Engineering (WECE) at Worcester Polytechnic Institute (WPI), Legaspi received the IEEE Community Service Award as well as the Eta Kappa Nu (HKN) Outstanding Contributor Award of the Gamma Delta Chapter for her revitalization efforts. Most recently, Legaspi took on responsibilities in expanding Science Technology Engineering and Math for the Underrepresented Population (STEM UP) and the Women's Leadership Initiative (WLI), both for underrepresented groups within her place of work as an Applications Engineer at ON Semiconductor in Rhode Island.

FORUM SPEAKERS



Sarah Lyon

Advisory Systems Engineer, RADAR Systems Engineering, Northrop Grumman

Sarah Lyon was raised in Baltimore, MD, earning a B.S. from Virginia Tech and an M.S. from Johns Hopkins University. Ms. Lyon has had multiple technical roles, including Software Engineering, Systems Engineering, and Algorithmic Development, participating as both a team engineer and technical lead. Her career spans projects in Air Traffic Control Radars, Real-Time Bus Tracking/Management Systems for city transit systems, and Airborne Surveillance Radars.



Carolyn Matheus

Associate Professor of Information Systems, Marist College

Dr. Carolyn C. Matheus is an Associate Professor of Information Systems at Marist College. She holds a PhD in Organizational Studies with an emphasis on leadership and work motivation from the State University of New York (SUNY) at Albany. She teaches undergraduate courses in information technology and systems with a focus on information quality and human computer interaction (HCI), as well as graduate courses with a focus on C-level leadership and analytics in technology organizations. She is a regular faculty speaker for the Emerging Leaders Program, which provides a lecture series and workshops to college students to help them explore their leadership style and develop their leadership skills. She also leads an annual, service-learning study abroad program in which Computer Science and Spanish students collaborate to host a technology education summer camp for junior high students in the Dominican Republic.



Brenda Matthis

Associate Professor at Lesley University's Graduate School of Education

Dr. Brenda G. Matthis, an Associate Professor at Lesley University's Graduate School of Education, is the Director of the Ph.D. Program in Educational Studies Division, where the majority of her advisees are doctoral candidates researching technology and education. She is also a faculty member in the STEM Division. Her areas of expertise include the social construction of software, emergent technologies for Late-Deafened and Hard of Hearing (HOH) adults, technologies for K-12 students with disabilities, universal design for learning, and robotics for educators. Her career began as a software programmer and progressed to storage devices, systems networking and multimedia education. Dr. Matthis, a Fulbright Scholar, through the CIES Fulbright Lecturer and Researcher Program in Fukuoka, Japan, researched special education in K-8 schools and lectured on special education and technology in the United States, at the Fukuoka University of Education, 2005-2006. She received her Ed.D. in Human Development and Psychology, with the dissertation *Voices from the Other Side of the Screen: Software Designers Reveal Their Stories That Reside Within Their Creations*, Harvard University; an Ed.M. in Technology in Education, Harvard University, and B.B.A. in Industrial Relations, the University of Wisconsin – Milwaukee. She teaches the course *Learning, Design and Robotics: Gateway to Critical Thinking*, in the Educational Technology Program at Lesley University, for which she is writing a companion digital textbook.

FORUM SPEAKERS



Gretchen McClain

Board of Director: AMETEK, Inc., Booz Allen Hamilton Holding Corporation, and Boart Longyear Limited

Gretchen W. McClain is an accomplished business leader who thrives on energizing organizations and building businesses by enhancing innovation and developing exceptional leadership talent. With more than 25 years of global experience in both Fortune 500 corporations and government service, including serving as founding CEO of an S&P 500 global water technology company, Xylem Inc., and NASA's Chief Director of the International Space Station, McClain brings extensive business, developmental, strategic and technical expertise. McClain serves as a Board of Director for three publicly traded companies: AMETEK, Inc., Booz Allen Hamilton Holding Corporation, and Boart Longyear Limited; a private, family owned business, J.M. Huber Corp; and serves as an Advisor to EPIC Ventures, an early stage venture firm. Through her consulting practice, GWMcClain Advisory Services, McClain provides leadership coaching and business services to CEOs and executives, frequently working with start-up businesses and private equity firms on strategic development, business growth and expansion, including M&A support. She is also a thought leader and speaker on connecting your work to your higher purpose, becoming a stand-out leader, and the adventurous paths available to engineers and technologists in the 21st Century.



Danita Mitchell

Department Manager – AST Mission Solutions, Raytheon

Danita Mitchell was raised in Baltimore, MD, earned 3 degrees from Johns Hopkins University, as well as, PMP and SCPM Certifications. Throughout her career, Ms. Mitchell has had opportunities to support multiple business areas and has held leadership roles in several technology areas including Systems Engineering, Research & Development, Digital Technology, Software Engineering, Digital and RF Integrated Circuits and Integration & Test. Ms. Mitchell has also led Community Outreach, Employee Resource Group and Employee Engagement activities.



Maura Moran

IEEE-USA's Vice President for Government Relations & Partner, Cambridge Technology Law LLC

MAURA K. MORAN is currently IEEE-USA's Vice President for Government Relations. She serves on the IEEE-USA Board of Directors and provides direction and oversight of IEEE-USA's government relations programs and policy committees, advocating to the U.S. Government on behalf of the more than 200,000 U.S. members of IEEE on issues such as immigration, R&D and STEM education policy and funding, entrepreneurship and innovation, aerospace, transportation, communication, cybersecurity, Intellectual Property (IP). This year, Maura is leading IEEE-USA's first Transition Team Outreach Initiative for alerting Presidential and Congressional campaign transition teams as to the issues that are important to IEEE's U.S. members. Through the Initiative, the policy committees have prioritized their issues and developed position statements with an eye toward providing technological context for those issues, building relationships; and setting the stage for future advocacy. Maura is also a partner at Cambridge Technology Law LLC, where she focuses her legal practice on intellectual property (IP), technology transfer, licensing, and strategic alliances. She advises research and development, sales, licensing, and marketing teams of global enterprises, small businesses, start-ups and universities.

FORUM SPEAKERS



Andy Moysenko

Owner, Advyse

Andy Moysenko is Owner of Advyse, a consulting firm specializing in Business Transition Planning. Through Advyse, he offers individual and group programs to enable successful late career transitions for business owners, professionals, and executives.

Andy is an ASQ Certified Manager of Quality / Organizational Excellence and an STPI Certified Transition Planning Consultant. He is also a Senior Member of the American Society for Quality and a Life Member of the IEEE. He currently serves as a Director and Secretary for the Northeast Business Alliance and as Programs Chair for ASQ's Merrimack Valley Section. Additional affiliations include the American Management Association, the System Dynamics Society, and SOL, the Society for Organizational Learning. He is a member of ProVisors, the Greater Lowell Chamber of Commerce, and the Chelmsford (MA) Business Association.



Sarah Ostadabbas

Assistant Professor, Northeastern University

Sarah Ostadabbas joined Northeastern University, Electrical and Computer Engineering Department in September 2015 as an Assistant Professor from Georgia Tech, where she was a post-doctoral researcher following completion of her PhD at the University of Texas at Dallas in 2014. She has recently formed the Augmented Cognition (AC) Laboratory with the goal of enhancing human information-processing capabilities through the design of adaptive interfaces via physical, physiological, and cognitive state estimation. Ostadabbas has over 4 years of experience developing medical and assistive technologies successfully bridging engineering theory and clinical practice. Sarah is the co-author of more than 40 peer-reviewed journal and conference articles, and is an inventor on two US patent applications. She is a member of IEEE, IEEE Women in Engineering, IEEE Signal Processing Society, IEEE EMBS, IEEE Young Professionals, and ACM SIGCHI. She has been recently featured as one of the female pioneers of Engineering on National Women in Engineering Day by RE-WORK"



Dave Palmer

CEO, Incyte Strategies LLC

Dave Palmer is CEO of Incyte Strategies LLC. Known for his "meaningful impact" approach to solving business growth issues, Dave has helped hi-tech, low-tech, and no-tech businesses increase sales, expand their product lines, reach new markets, and outshine the competition. Dave's career covers diverse industries, including software, healthcare, manufacturing, integrated systems, professional services, medical devices, education services, and publishing. After 20+ years of corporate work, Dave opened his own firm, Incyte Strategies LLC. Today, Dave provides user-centric strategic marketing ideas, plans, and insights to clients ready to think differently to grow their businesses. Dave's goal is to help every business unlock the power of "WHY" questions and user-centric thinking. A graduate of Duke University and the University of Michigan's Ross School of Business (MBA), Dave has also been a volunteer and leader in several not-for-profit associations, filling knowledge and capability gaps where he can.

FORUM SPEAKERS



Jungnam Pleasant

Embedded Systems Software Engineer, Northrop Grumman

Jungnam Pleasant earned her bachelor's degree in Computer Science from University of Maryland Baltimore County (UMBC) and obtained a Certificate of Information Systems Security from University of California, Irvine, University Extension. Throughout her career as a software engineer at NGC, Ms. Pleasant has worked on multiple engineering programs, but mostly (and currently) in Airborne Surveillance Radar Systems. Other program areas include Ground Radar Systems, Airspace Management Systems, Electro Optical Sensors, etc. Ms. Pleasant also participated in NG Women Engineers ERG as an officer and a member.



Ariunbolor Purvee

Associate Professor, Mongolian University of Science and Technology

Ariunbolor Purvee has approximately twenty-two years of working experience in both mines and mining engineering institutions, currently is working as an associate professor in the Department of Mining Engineering at the Mongolian University of Science and Technology. She is also a researcher on mining electrical equipment and mining automations. Her research interests are in online condition monitoring of electrical motors, artificial neural network, signal processing, robust design and quality engineering, quality of energy in electrical power supply system, dynamic simulation based on Matlab and product simulation based on engineering statistics. In particular, she is interested in the role of dynamic simulations as diagnosis faults in electrical and mechanical equipment and quality of energy of low voltage power supply systems and artificial neural network. Ariunbolor Purvee holds a Master's degree in Mining Engineering and a PhD in Electrical Engineering from the MUST, Mongolia.



Maryam Rahmani

Graduate Student, UMUC

Maryam Rahmani is a mid-career technologist with over 23 years of technology sales experience focused on delivering technology solutions to Fortune 500 companies. Maryam is a graduate of the University of Florida with a degree in Electrical Engineering. She is currently pursuing her Master of Science in Cybersecurity Policy at University of Maryland University College. Maryam is the Technical Co-Chair for the 2016 Women in Engineering (WIE) IEEE Forum East. She is the IEEE-Computer Society Vice Chair and Membership Liaison for Washington-Northern Virginia chapter. She is the Outreach Coordinator for membership at large (MAL) with Society of Women Engineers (SWE). Maryam serves on the board of the Society of HPC Professionals (SHPCP). Additionally, she is a member of ISSA and WIS SIG. She advocates STEAM (STEM+Art) careers for women.

FORUM SPEAKERS



Susan Raymon

Regional Proposal Manager, Rockwell Automation

Wife and mother of two. Affiliated with numerous societies supporting women, including Co-chair on Advisory Committee for RA WiFi, OES inclusion committee, customer advocacy committee, PWC, SWE, AWAFF, Participated on leadership panel for COMPES (SWE, SHPE, NSBE). Created and executed multiple strategies - Field Quality globally and CSM. Led teams; grew business in multiple business sectors - Rockwell District Services Manager 10% YOY and Visteon Sales Manager - axle/driveline \$41.5 Mil incremental. Influence multiple levels - Expanded Field Quality into all regions, launched new vehicle programs. Negotiating - Saved Ford \$40 mil YOY. Develop employees - Remote, local, diverse, multiple levels. Standardized processes in the field, across businesses and regions. Strong collaboration skills - Resolved critical customer quality issues (sales, distributors, customers)



Stacy Roopnarine

Government Minister of State, and former elected Member of Parliament in the Republic of Trinidad and Tobago

Stacy Roopnarine is a former Government Minister of State, and former elected Member of Parliament in the Republic of Trinidad and Tobago. She is an Electrical Engineer by profession with over 5 years of telecommunications experience with Caribbean telecommunications giant Digicel. Ms. Roopnarine obtained a BSc. (Hons) in Electrical and Computer Engineering from the University of the West Indies in 2005 and she has since been a member of the Institute of Electronics and Electrical Engineers (IEEE). She was also instrumental in setting up the first student branch of the IEEE at the University of the West Indies, St Augustine campus. Ms. Roopnarine is passionate about gender equity and has represented Trinidad and Tobago in numerous international women conferences. She also served as the Chairperson of the Women's Arm of her political party, the United National Congress from 2012 to 2015. Presently Ms. Roopnarine is a Consultant and a Volunteer. She is also pursuing a Masters in Business Administration at the Heriot Watt University. Ms. Roopnarine is an avid humanitarian and her guiding principle is that service to man is service to God.



DeeDee Smartt Lynch

Global Interaction Strategist, Team Coach, and Consultant

DeeDee Smartt Lynch is a global interaction strategist, team coach, and consultant with more than 30 years of professional experience. She is a national expert on Belbin Team Roles, a Certified Belbin Trainer and has designed multiple Belbin games and exercises. DeeDee holds a number of additional certifications relating to leadership, employee engagement, team development, and human resources. As a successful entrepreneur, DeeDee owned an event management company in Austin, Texas, specializing in corporate events and reunions, producing more than 250 turnkey events. Prior to that, she worked at the Texas State Legislature for three state representatives. She is the current Vice Chair and Chair Elect for the National Communication Association – Training & Development Division.

FORUM SPEAKERS



Kemi Sorinmade

Leadership Trainer, Speaker & Coach, The Growth Studio

Kemi Sorinmade is the owner of the Growth studio, a performance improvement and leadership development firm based in Massachusetts. She has over 20 years of combined experience as an engineer, project manager and process improvement coordinator. She works with science, engineering, and technology professionals to help them solve work place challenges and become better leaders so that they can truly succeed in their different roles. She is a certified leadership development coach with the John Maxwell team and she has worked with individuals, business leaders and organizations by offering improvement and leadership development strategies for more effectiveness and growth. She holds a Bachelor of Science degree in Chemical Engineering and a Master of Science Degree in Engineering Management from Northeastern University, Boston.



Geetika Tandon

Senior Technical Advisor/Technical Director, SRA International

Geetika Tandon is a Director of Technology at SRA International, a technology consulting firm headquartered in the United States. She was born in Delhi, India and migrated to the United States in 1997. Geetika holds a Bachelors in Architecture from India and a double Masters in Architecture from the University of Southern California and a Masters In Computer Science from University of California Santa Barbara. Geetika has over 15 years of Industry experience with software development, middleware integration and technology consulting. She is currently the Director of Technology and Architecture with SRA International. In her previous capacity she worked with Deloitte as a Program Manager and IBM for over 9 years, serving in their WebSphere integration Middleware group as an Executive IT Architect. She started her career in software technology as a developer working on voice and RFID solutions. She currently holds 4 patent files and 4 IP publishes. She has also presented at the IEEE Software Technology Conference, Women in Engineering conference and the IBM Technology Conference at various occasions. Ms. Tandon is a member of the IEEE software Technology Group, IEEE Women in Leadership forum and the Society of Women Engineers. She was an evaluator for the Systems and Technology Invention Disclosure Team in IBM, led the Women in Technology group in the DC Area within Deloitte and has been a speaker on STEM at the white house on women and girls.



Barbara Taylor

Partner, JanBara & Associates

Barbara Taylor offers 20+ years of expertise in business coaching; talent management and succession planning; leadership development; high potential identification; and performance management. Barbara has built a reputation for designing creative leadership development programs. She has designed and implemented effective talent management strategies for numerous Fortune 500 clients including Comcast, New York Life, GlaxoSmithKline, AstraZeneca, L3, Sara Lee, Goodwill and Kellogg Company. Currently, she is a business partner of JanBara & Associates, a coaching and executive development firm specializing in accelerating the performance of people and organizations. It is the people who make a company successful. People working with purpose ... perform. At JanBara, we believe that purposeful human performance is the greatest contributing factor to a company's success. We work with companies to identify and develop the skill sets, behaviors and experiences to maximize their ability to execute their business strategies successfully.

FORUM SPEAKERS



Dana Voll

Co-Founders, TINKER

Katherine Czerniejewski, Julie Fetzter, and Dana Voll are the founders of TINKER: an organization that establishes engineering programs for high school girls on university campuses. Originally founded in 2015 as a single one-week summer camp at SUNY Buffalo, TINKER has since been established as an annual program and expanded to multiple universities. TINKER is designed to break down the barriers and stereotypes that often prevent young women from pursuing careers in STEM through mentorship and empowerment. Czerniejewski received her BS in Biomedical Engineering and BA in Mathematics from SUNY Buffalo in May 2016 and is currently obtaining her MSE at Johns Hopkins University in Bioengineering. Fetzter is pursuing a double major in Civil Engineering and Industrial Engineering at SUNY Buffalo and will graduate with her BS in Spring 2017. Voll graduated with a BS in Electrical Engineering in May 2016 and currently works for Northrop Grumman in Baltimore.



Amory Wakefield

Director of Product, True Fit Corporation

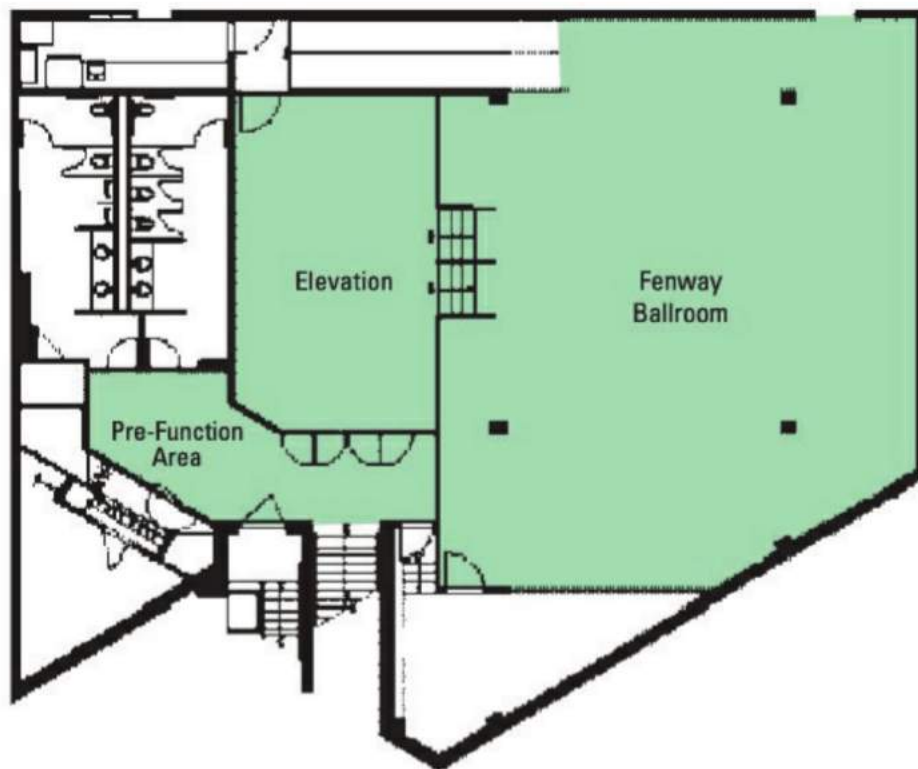
Amory Wakefield is currently Director of Product at True Fit Corporation in Woburn, MA. She has spent over 15 years managing products at top technology companies in Massachusetts, including MathWorks, Texas Instruments, and E Ink. Amory is passionate about helping women and other under-represented groups succeed in technology careers. She volunteers time to many initiatives, including programs sponsored by Big Sister, MentorNet, Smith College Picker Engineering Program, Cambridge Friends School, UMass Lowell and MIT. In addition, she served for over a decade on the Alumnae Board of the MIT Women's Independent Living Group, helping young women develop leadership skills and navigate entering the workforce. Professionally, she has served as an official mentor within several organizations, and continues to be an informal mentor to many current and former colleagues. Amory has been a member of IEEE since 1997 and is currently a member of the IEEE 3D Body Processing Working Group. Amory has both a Bachelors and Masters degree from MIT in Electrical Engineering.

NOTES

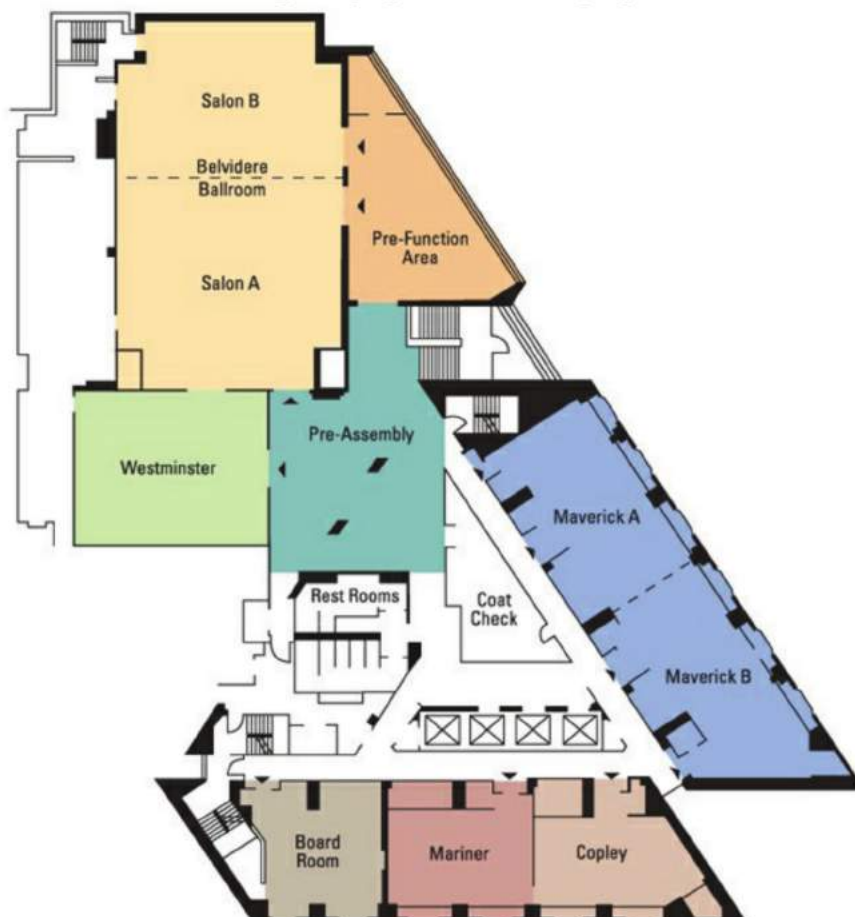
1. *Connect to the “AVMS-Meetings” Network SSID*
2. *Open a web browser*
3. *You will be prompted by the log in Splash Page*
4. *Enter the username/password and click ok*
5. *You are now connected to the internet*

Username: IEEE
Password: IEEE2016

FIRST FLOOR



SECOND FLOOR





Join IEEE WIE today!
<http://wie.ieee.org/join/>

**IEEE WIE Forum USA East is sponsored by IEEE WIE, IEEE-USA, IEEE Region 1,
IEEE Region 2 and IEEE Boston Section**