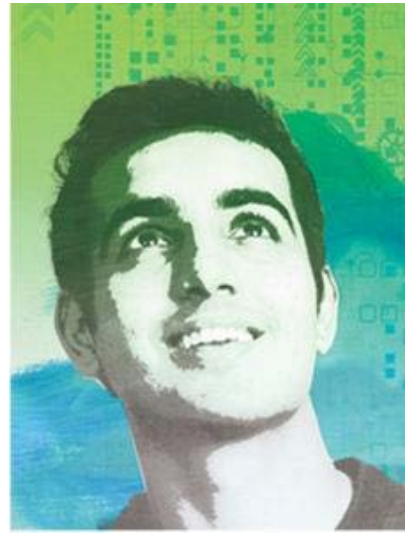


IEEE students



IEEE
students

About me: Dr. Elisa Barney

- Professor of Electrical and Computer Engineering at Boise State University in Boise Idaho.
- 2000-2002 Chair Boise Section
- Helped start student branch at Boise State
- Faculty advisor for student branch at Boise State off and on for 20 years.
- 2005-2006 Region 6, Northeast Area chair
- 2017-2018 Geographic Unit Operations Committee member.
- 2019 SAC Chair



Student Activities Committee (SAC) Mission

To deliver a common, high quality IEEE Student Member experience globally, for lifelong, professional success through IEEE.

The SAC Vision is: To be recognized as the global platform to inspire, enable, develop, and support students as the future leaders of our profession.

Your voice at IEEE - **The IEEE Student Activities Committee (SAC)**

The IEEE SAC is comprised of volunteers from all around the world who are responsible for student programs and activities. These volunteer members provide important viewpoints and information, and represent the voice of the 100,000+ IEEE Student and Graduate Student Members worldwide.

The mission is to:

"deliver a common, high quality IEEE Student member experience globally, for lifelong, professional success through IEEE membership."



World Student Membership Counts

How many student members are there in the world?

- (a) 1 000-5 000
- (b) 5 000-10 000
- (c) 10 000-50 000
- (d) More than 50 000

IEEE Students At a Glance



- 100,000+ student and graduate student members
- 25% of overall IEEE membership
- In 100+ countries and at 3200+ institutions
- Provides pipeline to Higher Grade membership (~5,000/year)
- Graduate Student Membership on the rise
- Retention continues to be a challenge

Student Membership Statistics

(as of 31 January 2019)

- Undergraduate Student Membership: 81,169 members
- Change from January 2018: 0.3% decrease

- Graduate Student Membership: 48,032 members
- Change from January 2018: 5.7% increase

What do they need and want from us?

- Access to meaningful career resources
- Participation at local events as well as conferences
- Technical content and continuing education
- Professional networking and mentoring
- Scholarships, Awards and Contests
- Interesting volunteer opportunities
- Easy access to modern products & services

Do you know?

- **How to ensure your IEEE Member Profile is up-to-date?**
 - Login to your IEEE account (annually) and be sure your personal information is accurate (address, email, school name, graduation date, etc.)
- **How to locate your IEEE Member number?**
 - Login to IEEE account to obtain your member number and remember to save it 😊. Download your Membership Certificate via [IEEE Collabratec](#).
- **How to find other IEEE Student Branches?**
 - Visit students.ieee.org and search on the worldwide map for a listing
- **How to find professional IEEE Members?**
 - Visit the Member Directory via IEEE Collabratec.
 - Search [IEEE Rosters](#) (volunteers only) to locate names and emails of members and volunteers.



What do IEEE Student Members want?

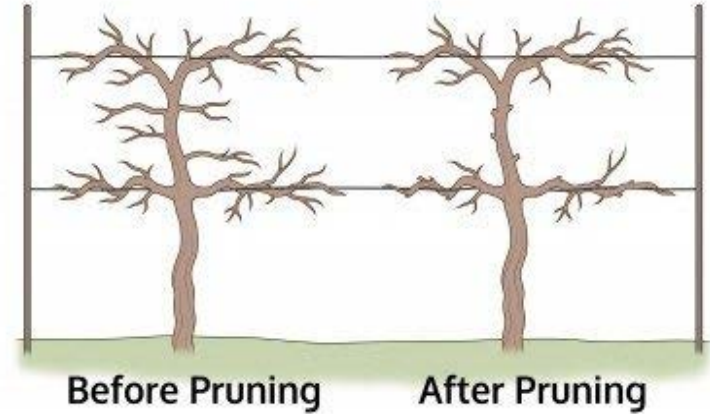
Student Members Want...	The IEEE provides its members...
	courses.
C	C for awards.
	professionals from around the world through Collabratec.

students



2018 Accomplishments

- New Student Website - students.ieee.org
- Formal launch of New Student Visual Identity
- Strengthening the Section Branch Connection
 - Best practices videos for Branches and Sections
 - Preparation for changes to annual reporting and rebate timelines
 - Development of new volunteer training modules in CLE
 - Clean up of student rosters and compliance with Ops Manual
 - Work requests made for improved reporting via OU Analytics
 - Branches reporting to sections
 - Dissolving and rejuvenating Branches



Student Retention Initiative

Peru

29 Branches
23.7% Retention

Webinar and training to be deployed in Spanish to selected Branches and Section volunteers and will be available live and for future download

Santa Clara Valley

5 Branches
47.2% Retention

Professional networking emphasis during webinar training and connection to YP SEED program

Madras

109 Branches
18.3% Retention

Value of IEEE membership emphasis webinar training; piloting the use of a badge within Collabratec; increase knowledge of technical communities within CT

Tunisia

27 Branches
31.2% Retention

Opportunities and benefits emphasis during webinar training and support for finding a mentor within CT

Goals/Measures of Success

- ▶ By the end of the 2019 membership year:
 - Increase first-year student retention by 3%
 - August 2018 retention rate = 26.3%, 2019 goal = 29.3%
 - Increase overall student member retention by 5%
 - August 2018 retention rate = 37.4%, 2019 goal = 42.4%
 - Outcome: Incremental increase of 4,600 student renewals = ~\$138k in dues revenue
- ▶ For the four Sections:
 - Did the tests have an impact on retention?
 - Specific measures developed based on the test chosen

2019 SAC Priority Projects

1. Continuation of Student Retention and Branch Section Connection Initiatives

2. Increase Student Engagement in Collabratec

- Ambassadors Program
- Partnership with Potentials Magazine
- Student Branch Discussions
- expand the Global Student Network.

3. Address needs of Southern Hemisphere members and volunteers

4. Awards Program

- Revise procedure and transparency ← Need Region help !
- Plan for after sunset of FluidReview

Are you reading Potentials

Magazine?

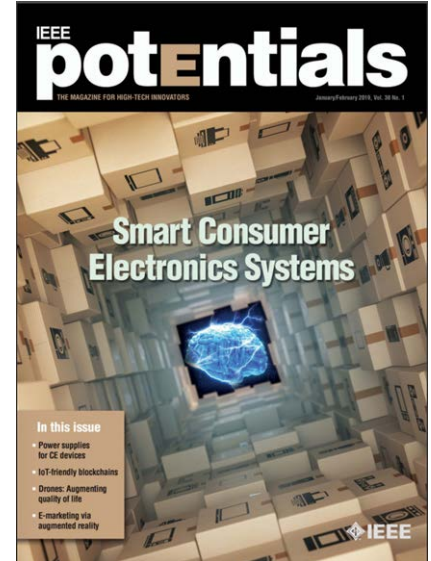
Potentials Magazine is a publication directed to all students and addresses global issues, technology trends, and career development topics.

- Explores career strategies
- The latest in research
- Technical developments
- Relates theories to practical applications
- Highlights technology's global impact
- Generates international forums
- Sharing of diverse ideas about the profession

> 2019 Schedule of Publications:

- March/April
- May/June
Technology
- July/Aug
- Sept/October
Education
- November/December

IEEE
students



The Internet of Things
Sports Science and

New Frontiers in Radar
Careers and Graduate

Self-Driving Vehicles






IEEE Collabratec™

- IEEE's new professional networking / collaboration platform
- Facilitates interactive communities and collaborative research
- Open to everyone, but with exclusive privileges for IEEE members
- **Competitively positions IEEE for the future** of professional networking, career development, and publishing
- A **knowledge network** unlike any other

ieeecollabratec.org

IEEE.org | IEEE Xplore Digital Library | IEEE Standards | IEEE Spectrum | More Sites Cart | Create Account | Sign In

 | Bright Minds. Bright ideas. 



Network, collaborate and create with technology experts globally.

[Sign In](#) [Create your free IEEE account](#)

[Overview](#) [Professional Networking](#) [Researching](#) [Authoring](#) [Collaborating](#)

One Central Hub | IEEE Collabratec™ can help you:

Scope and depth of expertise in engineering and technology **not found** in general social networks

Communities for Student Members

ieeecollabratec.org



Global Student Exchange
2389 participants



IEEE Young Professionals
4480 participants



IEEEXtreme
3476 participants



IEEE Membership Forum
434 participants



Women in Leadership
1449 participants



CareersConnect-India
974 participants



CareersConnect-USA
1649 participants



Eta Kappa Nu
438 participants

- Global Student Exchange
- Young Professionals
- IEEEXtreme
- Eta Kappa Nu
- IEEE Membership Forum
- CareersConnect-USA
- CareersConnect-India
- Women in Leadership
- IEEE Day
- IEEE AuthorLab
- IEEE Entrepreneurship Exchange

Remain technically current with



IEEE Xtreme is a global challenge in which teams of IEEE Student members compete in a 24-hour time span against each other to solve a set of programming problems. The competition provides IEEE Student Members a challenge to embrace teamwork to develop for career success in technology fields. Join the IEEE Xtreme communities on IEEE Collabratec and Facebook!

How many students participated in IEEE Xtreme last year?

- (a) 500-1 000
- (b) 1 000-2 000
- (c) 2 000-5 000
- (d) More than 5 000



Remain technically current with **IEEE Xtreme**



IEEE Xtreme is a global challenge in which teams of IEEE Student members compete in a 24-hour time span against each other to solve a set of programming problems. The competition provides IEEE Student Members a challenge to embrace teamwork to develop for career success in technology fields. Join the IEEE Xtreme communities on IEEE Collabratec and Facebook!

Who participates in IEEE Xtreme?

- 9,400+ students
- 4,240 teams
- 670+ institutions participate
- 75+ countries
- 100,000+ Facebook followers
- 900+ Proctors
- 350+ Public Relations Volunteers



IEEE Provides Educational Resources

www.ieee.org/education



Trynano.org



Itunes University



IEEEXplore Digital Library



IEEE.tv



Try computing.org



IEEE E-learning Library



NEW Student Resources

- Volunteer Training - [Branch Leadership Training](https://iee-elearning.org/CLE/)
<https://iee-elearning.org/CLE/>
- Video Training - [Best Practices for Student Branches](https://ieeetv.ieee.org/ieee-products/student-branch-leadership-ieee-students?>)
<https://ieeetv.ieee.org/ieee-products/student-branch-leadership-ieee-students?>
- New Website - students.ieee.org
- New Visual Identity - [Resources and Toolkit](https://brand-experience.ieee.org/guidelines/brand-identity/sub-brand-guidelines-and-templates/students?>)
<https://brand-experience.ieee.org/guidelines/brand-identity/sub-brand-guidelines-and-templates/students?>



Changes to Annual Reporting

- NEW: **Student Branch Annual Plan**
 - Replaces the current Student Branch Activity Report
 - Opens 15 November 2018
 - Closes 1 February 2019
- Students should connect with their local Section to assist with developing yearly plan and ask for support/resources.
- To be eligible for 2019 Rebate, Branches must submit the new Annual Plan by 1 February. Plans submitted after 1 February 2019, will not be considered.
- Plans will need to be completed by 1 February annually moving forward.

Note: if your Branch does not meet the minimum membership requirement of **10 members**, you risk losing your IEEE Student Branch status.



Develop and Document Business Plan

As WIE and Young Professionals have done, develop and document a 3-5 year data driven business plan for the IEEE Student Program in tandem with the leadership.

Components:

- Consider replication and scalability of R6 Rising Stars program
- Transition from graduation to Young Professionals and awareness/participation in destination Section activities
- Closer Collaboration with IEEE HKN with emphasis on training
- Assessment of existing career resources and exploration into potential new products and services
- Enhanced computing resources with focus on reporting and analytics

IEEE Collabratec Student Ambassadors Program

- IEEEExtreme Student Ambassadors have been invited to participate in being a Student Ambassador for Collabratec
 - Proven track record for success: Success breeds success
 - Driven towards volunteerism
- Invitations have been sent: 125 positive responses to date
- Series of tasks over 12 weeks starting February 19
 - Phase 1: 6 weeks
 - Phase 2: 6 weeks by invitation only to graduate to Lead CT Ambassador
- Desired Results:
 - Feedback on platform
 - Student engagement in platform
 - High achievers will be invited to be Lead CT Ambassadors for their region

**In collaboration with Julie Bernicker, CT Online Community Specialist*

2018 SAC Priorities

Section - Student Branch Connection

- Strengthening interaction between parent and child units to help students fully understand the power of the larger IEEE beyond the campus experience.

Student Branch Probation, Rejuvenation and Dissolution

- Leveraging operations manual compliance towards Student Branch roster integrity, enhanced vitality and improved university relations.

Student Digital Presence and Visual Identity

- Development of new and more modern web <https://students.ieee.org/> experience as well as unified branding across the globe.

Recent activities

- SAC Meetings via Collaboratec – no group telecoms, few group email blasts.
- Discussions in CT on
 - Student branch/member Best practices
 - Potentials magazine articles
- Awards 2019
- Southern Hemisphere

Recent observations

- Meetings with students in Mexico
 - 2 talks
 - 4 student branches
- Want to connect with section, but no communication
- Want to connect globally – like the idea of CT
- Want to increase their knowledge outside of classrooms –need access to speakers