
AP1000 Plant Update

IEEE SC2 Meeting
April 20, 2010
Las Vegas, NV

Suresh Channarasappa
channas@westinghouse.com



AP1000 Plant Update

- AP1000 China Update
 - Sanmen Unit 1 - Placement of the basemat concrete completed
 - ✦ After 46 hours and 58 minutes of continuously pouring ~5000 m3 of concrete.
 - ✦ It utilizes ~1,047 tons (950 metric tons) of reinforcing steel
 - ✦ It also uses ~ 1,000 anchor bolts
 - Completed placement of CA-20 Module
 - Containment Vessel Bottom Head Complete
 - Commercial start-up of the AP1000 unit in 2013.
 - Sanmen Unit 2 - Placement of the basemat concrete complete
 - Haiyang Unit 1/Unit 2

AP1000 Plant Update



Sanmen site view

AP1000 Plant Update



AP1000 Plant Update



AP1000 Plant Update



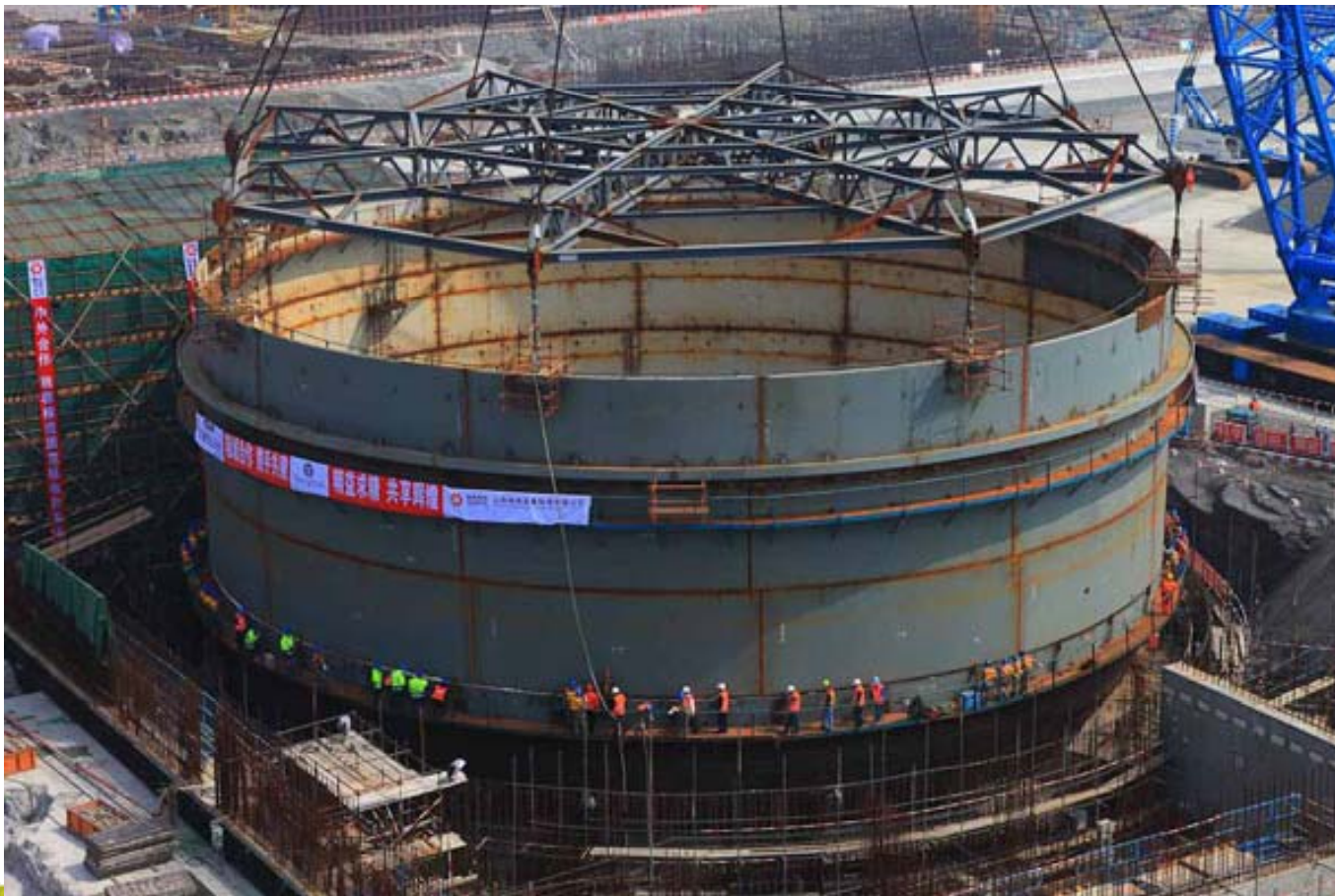
AP1000 Plant Update



AP1000 Plant Update



AP1000 Plant Update



AP1000 Plant Update

QUESTIONS??