



destination  
services

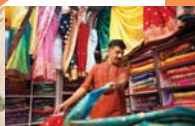
Sightseeing tours  
Singapore  
Malaysia



Gardens  
by the Bay  
SINGAPORE

# Welcome to Singapore

Vibrant with multi-cultural colours, ethnicities, and the excitement of a cosmopolitan city, Singapore is Asia's premier destination for work and play. With quaint heritage enclaves, iconic architecture, lush gardens, mouthwatering cuisines and a spectacular lineup of activities and events all year round, Singapore offers a spectrum of wondrous experiences for every preference. Start exploring now!



## USEFUL INFORMATION

### Getting Around

Affordable, efficient and well connected transport network: MRT (Mass Rapid Transit) system, public buses and taxis.

### Climate

Temperatures average around 31°C during the day, 24°C in the evening.

### Language

English, Mandarin, Malay and Tamil.

### Clothing

Casual, light summer wear for daily wear. Formal dress codes may be required at some establishments. Do check ahead.

### Electricity

Three-pin, square-shaped power plugs (220-240 volts AC).

### Drinking Water

Singapore's tap water is safe for drinking.

### Emergency Telephone Numbers

Police: 999 / Ambulance: 995

### No Smoking Please

Smoking is not allowed in air-conditioned areas like shopping centres, restaurants, entertainment outlets and cinemas. It is also prohibited on public transportation, lifts and certain public areas.

### Passport

Must be valid for at least six months upon arrival, even if you are in transit. A return ticket is also required. Please contact your embassy for more information. If you lose your passport while in Singapore, please make a police report immediately and inform your embassy in Singapore.

### Banking

General banking hours are from 9am to 3pm from Mondays to Fridays; 9.30am to 1pm on Saturdays. Selected banks on Orchard Road open on Sundays from 9.30am to 3pm.

### Currency

The currency of choice is the Singapore dollar (SGD) and cents. The smallest dollar note denomination is SGD2 while the biggest is SGD1,000. Coins are denominated in 5, 10, 20 and 50 cents, as well as SGD1.

### GST Refund

Tourists may claim for a refund of the 7% Goods and Services Tax (GST) for purchases above SGD100 made at participating retail shops. For more information, visit the Tourist Refund Scheme page on the Singapore Customs website at [www.customs.gov.sg](http://www.customs.gov.sg) or [www.iras.gov.sg](http://www.iras.gov.sg)

# CONTENTS

## EXPLORE SINGAPORE

	Days of Operation	Adult	Child
<b>01</b> City	Daily	S\$36.00	S\$19.00
<b>02</b> East Coast and Changi	Mo We Fr Su	S\$39.00	S\$20.00
<b>03</b> Round Island (With Lunch)	Tu Th Sa Su	S\$92.00	S\$50.00

## WILDLIFE ENCOUNTER

	Days of Operation	Adult	Child
<b>04</b> Morning @ The Zoo	Daily	from S\$54.00	from S\$33.00
<b>05</b> Day Safari Zoo & River Safari Combo	Daily	from S\$90.00	from S\$55.00
<b>06</b> River Safari	Daily	S\$54.00	S\$32.00
<b>07</b> Safari Expedition River Safari & Night Safari Combo	Daily	S\$99.00	S\$59.00
<b>08</b> Night Safari	Nightly	from S\$65.00	from S\$43.00
<b>09</b> Wings of Colour @ Jurong Bird Park	Daily	S\$48.00	S\$28.00

## UNIQUE EXPERIENCES

	Days of Operation	Adult	Child
<b>10</b> Walk with Our Ancestors	Mo We Fr	S\$268.00 per pax (min 2 pax)	
<b>11</b> Go Racing	Fr Su	S\$70.00	(Adult Only)
<b>12</b> Tiger Brewery	Mo ↔ Sa Except PH	S\$37.00	S\$30.00
<b>13</b> Cooking Local Delights	Mo ↔ Fr Except PH	S\$65.00	S\$65.00

## CULTURE & HERITAGE

	Days of Operation	Adult	Child
<b>14</b> Good Morning, Ni Hao	Tu We Fr	S\$41.00	S\$41.00
<b>15</b> Footsteps of Our Colonial Past	Mo ↔ Sa Except PH	S\$100.00	S\$60.00
<b>16</b> Peranakan Trail (With Food Tasting)	Tu Fr Except PH	S\$65.00	S\$32.00
<b>17</b> Hidden Charms of Tiong Bahru	Tu ↔ Fr	S\$168.00 per pax (min 2 pax)	

## ATTRACTIONS & THEME PARKS

	Days of Operation	Adult	Child
<b>18</b> Universal Studios Singapore™	Daily	from S\$76.00	from S\$56.00
<b>19</b> S.E.A. Aquarium™		from S\$39.00	from S\$29.00
USS & S.E.A. Aquarium™ Combo	Daily	from S\$110.00	from S\$80.00
Adventure Cove Waterpark™		from S\$38.00	from S\$30.00
<b>20</b> Gardens by the Bay	Daily	from S\$32.00	from S\$19.00
<b>21</b> LEGOLAND® Malaysia	Daily	S\$84.00	S\$72.00
<b>22</b> KidZania Singapore	Daily	from S\$35.00	from S\$58.00
<b>23</b> Trick Eye Museum	Daily	from S\$25.00	from S\$20.00

## ON SENTOSA

	Days of Operation	Adult	Child
<b>24</b> Morning @ Sentosa	Daily	from S\$68.00	from S\$60.00
<b>25</b> Afternoon till Sunset @ Sentosa	Daily	from S\$80.00	from S\$70.00
<b>26</b> Sentosa Fun Pass	Daily	S\$99.00	S\$82.00

## AFTER DARK

	Days of Operation	Adult	Child
<b>27</b> Singapore by Night (With Dinner)	Nightly Except PH	from S\$63.00	from S\$40.00
<b>28</b> Nightout @ Chinatown (With Dinner)	Nightly Except PH	S\$96.00	S\$72.00
<b>29</b> Nightout @ Marina Bay	We Fr Su Except PH	S\$82.00	S\$54.00

## FOOD & DINING

	Days of Operation	Adult	Child
<b>30</b> Cable Car Sky Dining	Daily	Sky Dining – Dinner S\$169.00 per pax (min 2 pax)	
<b>31</b> Heritage Foodelicious	Tu ↔ Fr	S\$168.00 per pax (min 2 pax)	

# EXPLORE SINGAPORE

## CITY

Explore the city by driving round the Civic District, passing by the Padang, Singapore Cricket Club, historic Parliament House and the National Gallery Singapore. The Gallery consists of the former Supreme Court and City Hall.

Stop at the **Merlion Park** and enjoy the impressive views of Marina Bay. Do not miss out this picture-taking opportunity



with The Merlion, a mythological creature that is part lion and part fish.

Visit **Thian Hock Keng Temple**, one of Singapore's oldest Buddhist-Taoist temples, before driving past Chinatown.

Proceed to Singapore's first **UNESCO World Heritage Site** – the **Singapore Botanic Gardens** and walk through the **National Orchid Garden** which boasts a sprawling display of 60,000 orchid plants.

Let your senses come alive at **Little India** as you walk past shops along the five-footway offering a variety of exotic fruits, spices, jasmine and orchid garlands.

### Note:

- Includes non-refundable admission to National Orchid Garden
- On Car-Free Sunday, National Gallery and Merlion Park will be replaced by Mount Faber.

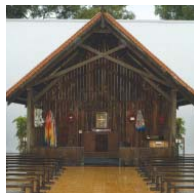
**PRICE: S\$36.00 (ADULT) S\$19.00 (CHILD)**

<i>Duration</i>	<i>Days of Operation</i>	<i>Pick-Up Time</i>	<i>Start Time</i>
3.5 hours	Daily	8.30am 1.30pm	9.00am 2.00pm

# EXPLORE SINGAPORE

## EAST COAST AND CHANGI

We begin at **Kampong Glam** – named after the Gelam Tree which grew in abundance in the 1800s. Once the seat of the old Malay Royalty, it still retains the charm of a bygone era and the influence of the Arab traders.

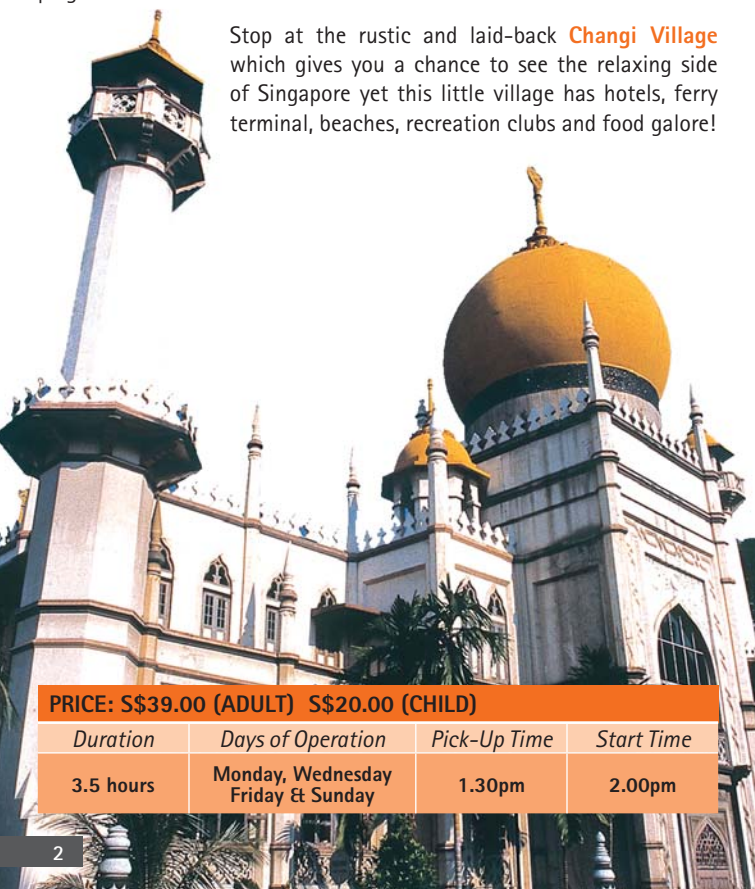


Make a stop at **Tampines New Town**, which received the United Nations World Habitat Award for being an outstanding human settlement project in 1992! See how much the town has changed in over 20 years since it won the award – the green spaces, the linked walkways to neighbourhood centres, transport network, parks and open spaces as well as varied block designs.



Continue to **Changi Beach** where our guide will recount stories of the horrific Sook Ching Massacre during World War II. There, you will see the plague that was erected to commemorate the lives that were lost.

Stop at the rustic and laid-back **Changi Village** which gives you a chance to see the relaxing side of Singapore yet this little village has hotels, ferry terminal, beaches, recreation clubs and food galore!



**PRICE: S\$39.00 (ADULT) S\$20.00 (CHILD)**

<i>Duration</i>	<i>Days of Operation</i>	<i>Pick-Up Time</i>	<i>Start Time</i>
3.5 hours	Monday, Wednesday Friday & Sunday	1.30pm	2.00pm

# ROUND ISLAND

(WITH LUNCH)

Start with a leisurely morning stroll along Singapore's highest pedestrian bridge – **Henderson Waves** and take in the lush greenery of Mount Faber and Telok Blangah Hill.

Continue west to **Haw Par Villa**, embark on an unforgettable journey into Chinese folklore and mythology at this park.

Journey north to the **Kranji War Memorial** to pay respects to the countless World War II heroes. Unveiled in 1957, the memorial commemorates over 20,000 men and women who gave their lives for freedom in World War II.

Lunch at a local restaurant before proceeding to **Bright Hill Temple**, a famous Chinese ancestral place of worship and admire its spectacular architecture.

We cross from North – Central to Eastern Singapore to make our next stop at the **Eurasian Heritage Centre**, that is housed within the Eurasian Association – a Self Help Group that serves the interests of the Eurasian community.

You might ask – who are the Eurasians? The term was originally coined in 19th-century British India to identify a person born to (usually) a British father and an Indian mother. But now it mainly identifies a person born of mixed ancestry – European and Asian.

The three main European groups were the Portuguese, Dutch and the British. The Heritage Centre showcases the heritage and culture of this fascinating group of people and their role in World War II.



## Note:

- Drinks during lunch are not included.
- Tour operates with a minimum of 02 adults.



**PRICE: S\$92.00 (ADULT) S\$50.00 (CHILD)**

<i>Duration</i>	<i>Days of Operation</i>	<i>Pick-Up Time</i>	<i>Start Time</i>
7 hours	Tuesday, Thursday Saturday & Sunday	8.30am	9.00am

# WILDLIFE ENCOUNTER

## MORNING @ THE ZOO

(WITH JUNGLE BREAKFAST OPTION)



Leave the city behind as we head north to Mandai and visit one of the world's top and most beautiful zoos. **The Singapore Zoo\*** is spread over 28 hectares and is a haven to over 3,600 mammals, birds and reptiles including some rare and endangered species. Natural barriers like streams, rock walls and beautiful landscaping are used to separate the animals from visitors thus creating an 'open zoo' effect. Come and experience a close brush with nature from the comfort of your **Tram** and on foot.



**Note:** Tour duration includes travelling time to and from the attraction.

*Tour w/o Breakfast*      **PRICE: S\$54.00 (ADULT) S\$33.00 (CHILD)**

*Tour with Breakfast*      **PRICE: S\$75.00 (ADULT) S\$45.00 (CHILD)**

<i>Duration</i>	<i>Days of Operation</i>	<i>Pick-Up Time</i>	<i>Start Time</i>
<b>4 hours</b>	<b>Daily</b>	<b>8.00am</b>	<b>8.30am</b>

 \*Voted Singapore Tourism Board Singapore Experience Awards 2013 and 2014.  
Best TripAdvisor's Travellers' Choice Awards 2015. Ranked #1 in Asia and #3 globally.



# DAY SAFARI

## ZOO & RIVER SAFARI COMBO

(WITH JUNGLE BREAKFAST OPTION)

A whole day of enjoyment at two of Singapore's natural attractions: Singapore Zoo and River Safari.

At the Singapore Zoo, animals roam freely in open and natural habitats separated from visitors by streams, rock walls and beautiful landscaping. Whether you explore by tram or on foot, your visit to the Zoo will be one of close encounters through feeding sessions of different animals or intimate encounters at its walk-through exhibits. Catch playful, gentle giants frolicking at the Elephants at Work and Play Show and stick around for the token feeding session where you will be up close to these gentle giants.

**You will have some free time on your own for lunch before the River Safari Tour.**

Continue your wildlife adventure at the iconic River Safari. Explore more than eight habitats at Asia's only river-themed wildlife park and don't miss out meeting Jia Jia and Kai Kai at the Giant Panda Forest. Stroll through Squirrel Monkey Forest and stop by the Flooded Amazon Forest to catch glimpses of the unique and amazing life that thrives in these rivers.



**Note:**

- River Safari – Boat ride will not operate during bad weather. Restrictions apply.
- Child between 1.06m to 1.35m must be accompanied by an adult.
- Tour duration includes travelling time to and from the attraction.



<i>Tour w/o Breakfast</i>		<b>PRICE: S\$90.00 (ADULT) S\$55.00 (CHILD)</b>	
<i>Tour with Breakfast</i>		<b>PRICE: S\$110.00 (ADULT) S\$65.00 (CHILD)</b>	
<i>Duration</i>	<i>Days of Operation</i>	<i>Pick-Up Time</i>	<i>Start Time</i>
<b>8 hours</b>	<b>Daily</b>	<b>8.00am</b>	<b>8.30am</b>

# WILDLIFE ENCOUNTER

## RIVER SAFARI

**River Safari** is Asia's first and only river-themed wildlife park. Inspired by the world's iconic river habitats, the park is home to 200 land and aquatic animal species.

Stroll along freshwater aquariums and luscious walk-through exhibits, including attractions such as the **Giant Panda Forest** and the world's largest freshwater aquarium – the Amazon Flooded Forest.

The tour includes a 10-15mins **boat ride**.



### Note:

- Tour duration includes travelling time to and from the attraction.
- River Safari – Boat ride will not operate during bad weather. Restrictions apply.
- Child between 1.06m to 1.35m must be accompanied by an adult.

**PRICE: S\$54.00 (ADULT) S\$32.00 (CHILD)**

<i>Duration</i>	<i>Days of Operation</i>	<i>Pick-Up Time</i>	<i>Start Time</i>
3.5 hours	Daily	1.30pm	2.00pm

Images depicted are property of Wildlife Reserves Singapore and are used with special permission.

# SAFARI EXPEDITION

## RIVER SAFARI & NIGHT SAFARI COMBO

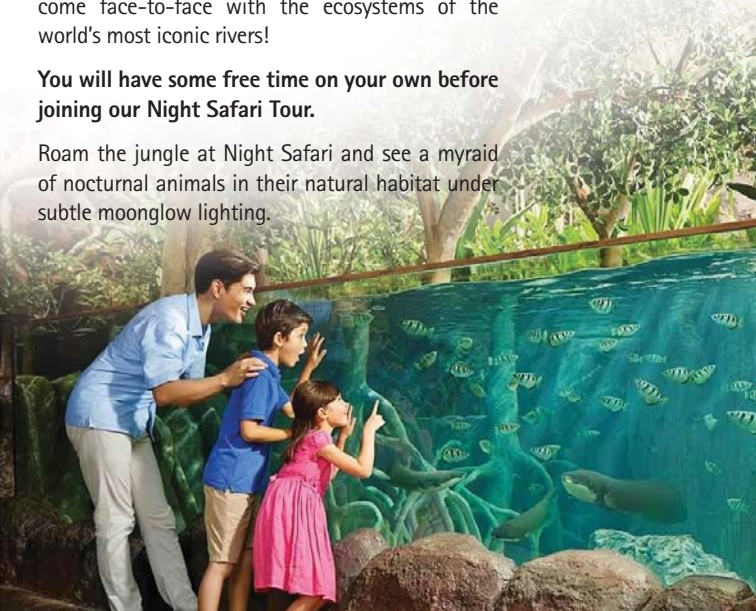


Venture into the wild as you explore both **River Safari** and **Night Safari** on a single journey with us!

Wander through River Safari, one of the world's largest repositories for river dwelling animals and come face-to-face with the ecosystems of the world's most iconic rivers!

**You will have some free time on your own before joining our Night Safari Tour.**

Roam the jungle at Night Safari and see a myriad of nocturnal animals in their natural habitat under subtle moonglow lighting.



### Note:

- Tour duration includes travelling time to and from the attraction.
- River Safari - Boat ride will not operate during bad weather. Restrictions apply.
- Child between 1.06m to 1.35m must be accompanied by an adult.

**PRICE: S\$99.00 (ADULT) S\$59.00 (CHILD)**

<i>Duration</i>	<i>Days of Operation</i>	<i>Pick-Up Time</i>	<i>Start Time</i>
<b>8 hours</b>	<b>Daily</b>	<b>1.30pm</b>	<b>2.00pm</b>

Images depicted are property of Wildlife Reserves Singapore and are used with special permission.

# WILDLIFE ENCOUNTER

## NIGHT SAFARI

PRIORITY TRAM BOARDING



The world's first **Night Safari**\*, set in 40 hectares of secondary jungle, will unfold the mystery and drama of the tropical jungle after dusk with stunning effects.

See a myriad of nocturnal animals, from fierce predators to timid forest dwellers, in their natural habitat under subtle moonglow lighting.

With **priority boarding**, you won't have to wait in line to board the tram which takes you through the East and West Loop. Pass by a large reservoir and weave through selected habitats designed specifically to replicate the natural environment from the Himalayan Foothills to the Southeast Asian Rainforest and Indian Subcontinent.

Let the guide take you on a walking trail to view some animals at close quarters. There will also be an opportunity to catch either the **Thumbuakar performance** of fire-eating skills OR a 20mins animal extravaganza at the **Creatures of the Night Show**, subject to weather conditions.

You can choose to add on a buffet meal of local favourites and international cuisine in a charmingly rustic setting at **Ulu Ulu Safari Restaurant**.



**Note:** Tour duration includes travelling time to and from the attraction.

*Tour w/o Dinner* PRICE: S\$65.00 (ADULT) S\$43.00 (CHILD)

*Tour with Dinner* PRICE: S\$99.00 (ADULT) S\$66.00 (CHILD)

<i>Duration</i>	<i>Days of Operation</i>	<i>Pick-Up Time</i>	<i>Start Time</i>
4.5 hours	Nightly	6.00pm	6.30pm

 \*Voted Singapore Tourism Board Best Visitor Attraction Experience Awards 2012, 2013 and 2014.

# WINGS OF COLOUR @ JURONG BIRD PARK



Home to 5,000 birds of 400 species, Jurong Bird Park spans 20.2 hectares of lush greenery within Singapore's model industry estate.

Visit 1,000 colourful lorries and have a chance to feed them at the **Lory Loft** - the world's largest Lory Flight Aviary. Take a ride on the **Tram** to visit the **African Waterfall Aviary**. Enjoy the spectacular **Penguin Expedition** and **High Flyer Show** at the Pools Amphitheatre.


The Bird Park's exhibits and aviaries are specially designed to closely resemble the natural habitats of the birds.



**Note:** Tour duration includes travelling time to and from the attraction. 

**PRICE: S\$48.00 (ADULT) S\$28.00 (CHILD)**

<i>Duration</i>	<i>Days of Operation</i>	<i>Pick-Up Time</i>	<i>Start Time</i>
3.5 hours	Daily	1.30pm	2.00pm

 \*Voted Singapore Tourism Board Singapore Experience Awards 2012.

# UNIQUE EXPERIENCES

## WALK WITH OUR ANCESTORS



Intrigued by the ancient practice of **Feng Shui** or geomancy? Discover why it's still very much alive in cosmopolitan Singapore!

Our first stop takes us to a **Hakka cemetery**. Built in the 1800s, it demonstrates how the ancient Chinese had believed in the importance of giving their ancestors a proper final resting place. It was considered the highest form of **filial piety** which would affect their **destiny** and ensure continued blessings for future generations.



Moving to bustling **Orchard Road**, we learn about its Feng Shui related buildings and how the previous Teochew cemetery hill is believed to be the land of seven falling stars. Explore an amazing **monastery** in **Toa Payoh** and see the semi-circular pond with **Nine Water Dragons** sprouting "Shui" or water to deflect "Sha Qi" or negative energy from the nearby highway.



Finally, we stop at Singapore's most iconic building – **Marina Bay Sands**. Believed to be the hub of prosperity, its many landmarks have been designed to enhance the vibrancy of the new Marina Bay financial district. From the imposing three towers to the oculus at the promenade, learn how these landmarks have been strategically placed to harness the "Qi" or positive energy from the Marina Bay.



**PRICE: S\$268.00 per pax (min 2 pax)**

<i>Duration</i>	<i>Days of Operation</i>	<i>Start Time</i>
4 hours	Monday, Wednesday, Friday	9.00am

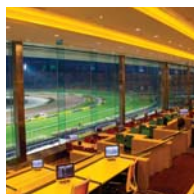
# GO RACING

Head to where the action is!

Here at the Singapore Racecourse, world-class thoroughbreds are not the only champions you will see. The Racecourse - boasted by cutting-edge design, state-of-the-art facilities, and all-weather quality tracks - ranks amongst the world's premier racing venues.

Racing is conducted in the evening under spectacular floodlights on Fridays, and in the afternoon on Sundays.

Your non-guided tour price includes return transfers and admission to the **Owners' Lounge** (or equivalent if not available) which is equipped with a full-service bar, restaurant, and a personal television screen at selected tables to give patrons a close-up view of the races.



## Note:

- Tour operates with a minimum of 2 adults.
- Tour duration of 4 hours includes travelling time and does not take in the entire race-day program.
- Please re-confirm 1 day before tour date as race schedule is subject to change.
- Meals/drinks are not included.
- Dress code is smart casual: no tattered jeans, shorts, bermudas, t-shirts (without collar and/or sleeves), slippers and sandals.
- Mobile phones are allowed on the Club's premises except for certain controlled areas and are to be switched to silent/vibrate mode.
- Persons below 18 years old are not permitted entry.
- Receive a Singapore Turf Club souvenir while stock lasts.

**PRICE: S\$70.00 (ADULT ONLY)**

<i>Duration</i>	<i>Days of Operation</i>	<i>Pick-Up Time</i>	<i>Start Time</i>
4 hours	<b>Friday Evening</b> (If Friday is a Public Holiday, tour will commence in the afternoon.)	5.00pm	5.30pm
	<b>Sunday Afternoon</b>	11.45am	12.15pm

# UNIQUE EXPERIENCES

## TIGER BREWERY

Have you ever wondered how beer is made? Join the Tiger Brewery Tour and discover how Singapore's iconic Tiger Beer is produced right here in Singapore.

The whole tour takes up to an hour and you will then be guided to the Tiger Tavern for your beer appreciation session!

### Visitor Centre

Kick-start the tour at the visitor center; and learn about the rich history and brand heritage of Tiger Beer.

### Ingredient Kiosk & Brew House

Gain insights about the ingredients that goes into Tiger Beer. Feel and smell the aroma of the malt at the ingredient kiosk and learn more about the brewing process at the Brew House.

### The Packaging Gallery

Learn to pour yourself a draught beer while our Tiger bottles and cans will bring you on an up-close journey of their packaging process at the packaging gallery.

### Tiger Tavern

Enjoy a glass of the freshest Tiger Beer as well as other brews during the beer sampling session at the Tiger Tavern.



#### Note:

- Tour duration includes travelling time to and from the attraction.
- This tour will share vehicle with passengers going on the Bird Park Tour.



**PRICE: S\$37.00 (ADULT) S\$30.00 (CHILD: 6-17)**

Duration	Days of Operation	Pick-Up Time	Start Time
3.5 hours	Monday to Saturday (except Public Holidays)	1.30pm	2.00pm



# COOKING LOCAL DELIGHTS

Let's step into The Baking Loft and enjoy the making of Chicken Rice, one of our national dishes, and the very popular Ondeh Ondeh.

For chicken rice, we will share with you the technique of making succulent and tender chicken together with the flavourful chicken rice as well as the must-have chilli and ginger sauces. You will get to roll your very own rice balls.

For dessert, make from scratch the popular ondeh ondeh which is a type of soft and chewy kueh using sweet potato filled with gula melaka and covered with desiccated coconut.

Once done, let's enjoy a fulfilling meal.

You will get personalised attention from our trainer with our small sized class of 10 pax. With step-by-step method recipes, you will find it a breeze to try them at home. Share your new found skills with your family and friends.

**NEW**



**Note:**

- Minimum 02 participants.
- Class duration is 2 hours.
- Cancellation made within 72 hours prior to the class date or no-show will incur a penalty of 100% of class charge per participant.
- Class menu, ingredients and instructors are subject to change.
- Participants should advise of any allergies or dietary restrictions at the time of booking.
- Make your own way to venue – The Baking Loft at 12 Eu Tong Sen Street, #05-169 Soho2@Central, Singapore 059819. Please reach 10 minutes before the class starts. Our personnel will bring you up to the loft at Soho2 lift lobby.

**10% OFF for GOOD MORNING, NI HAO passengers**

**PRICE: S\$65.00 (ADULT) S\$65.00 (CHILD)**

<i>Duration</i>	<i>Days of Operation</i>	<i>Start Time</i>
<b>2 hours</b>	<b>Monday to Friday</b> (except Public Holidays)	<b>12.00pm</b>

## GOOD MORNING, NI HAO

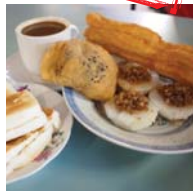
Move your senses with the sights and sounds of a **wet market** and watch how locals hunt for the freshest bargain. It's no mystery why the term 'wet' as stall owners use water in the market to wash floors, to keep fruits and vegetables fresh, and to keep fish and shellfish alive. Check out local favourites like century egg, black chicken and wide array of spices.

Next, adjourn to Singapore's largest food centre - **Chinatown Complex** for a leisurely breakfast.

Your day is not complete without visiting a **traditional and heritage shop** for a supply of herbs, tonic and even pastries for family tea time.

End your tour on a sweet note with a sampling of **local desserts**.

**WALKING TOUR**



**Note:**

- Includes pick-up from city hotels to tour centre to Chinatown
- Excludes drop-off at hotel

**Booking Hotline:**

- 8.00am to 7.00pm : 6738 2622
- 9.00am to 9.00pm : 6534 8942



**10% OFF for COOKING LOCAL DELIGHTS tour**

*Tour w/o Cooking Class*      **PRICE: S\$41.00 (ADULT) S\$41.00 (CHILD)**

*Tour with Cooking Class*      **PRICE: S\$99.00 (ADULT) S\$99.00 (CHILD)**

<i>Duration</i>	<i>Days of Operation</i>	<i>Pick-Up Time</i>	<i>Start Time</i>
<b>3 hours</b>	<b>Tuesday, Wednesday, Friday</b>	<b>8.30am</b>	<b>9.00am</b>

# FOOTSTEPS OF OUR COLONIAL PAST

Our tour starts at **The Singapore River** - the lifeline of Singapore where our first immigrants eked out a meagre living and saw Singapore transform from an obscure little fishing village to a great seaport. Admire beautifully restored warehouses that now house chic quayside dining and entertainment spots and the contrasting skyscrapers of the Financial District.



Then marvel at magnificent colonial buildings and five grand old bridges before stopping at our destination, **The Fullerton Hotel Singapore**. Enjoy a delightful three-tier

**Afternoon Tea** served at the sun-lit Courtyard with its magnificent high glass ceiling. Favourite items are replenishable and complemented by free-flow of premium teas and coffee.

Walk it all off at **The Fullerton Heritage Gallery** or mail a postcard home through the colonial-style **Red Pillar Post Box** located at the gallery. Let our guide take you back in time from when it was a Fortress built at the mouth of the Singapore River to the first General Post Office in the early 20th century and now the beautifully restored Fullerton Hotel, **Singapore's 71st National Monument**.

End this heritage trail on a **bumboat cruise** along the iconic Singapore River and watch the transformation from fishing village to a great seaport!



#### Note:

- Drinks are not included in tour price.
- Dress code for Afternoon Tea: Smart casual. Gentlemen should wear shirts or collared t-shirts, paired with appropriate long trousers. Ladies should wear dresses, skirts or trousers. Singlets, shorts, bermudas, sandals, slippers and pool attire are not permitted.
- Afternoon Tea will be served at The Courtyard. Venue is subject to change.

**Tour with Afternoon Tea** PRICE: S\$100.00 (ADULT) S\$60.00 (CHILD)

Duration	Days of Operation	Pick-Up Time	Start Time
3.5 hours	Daily (except Sunday & Public Holidays)	1.30pm	2.00pm

## PERANAKAN TRAIL

(WITH FOOD TASTING)

Join us on a colourful journey into the history, lifestyle and unique character of the Peranakan Babas (the men) and Nonyas (the women) ...

Take a walk through the **Spice Garden** which sits on the original site of the first Botanic Gardens and uncover the intricacies of spices and herbs that go into Peranakan cooking.

A fascinating **Display of Peranakan** costume, embroidery, beadwork, jewellery, porcelain, furniture and craftwork provides insight into the captivating culture of the Peranakans.

Wander through the bustling enclaves of **Katong & Joo Chiat** that showcases the rich and baroque Peranakan architecture. Admire rows of colourful traditional shophouses that dates back to the 1920s and 1930s.

A sampling of **Nonya Delicacies** will complete the trail.



**Note:** Tour operates with a minimum of 02 adults.



**PRICE: S\$65.00 (ADULT) S\$32.00 (CHILD)**

<i>Duration</i>	<i>Days of Operation</i>	<i>Pick-Up Time</i>	<i>Start Time</i>
3.5 hours	Tuesday & Friday (except Public Holidays)	8.30am	9.00am

# HIDDEN CHARMS OF TIONG BAHRU

The **Pinnacles @ Duxton** takes the title of being the world's tallest public housing project. Enjoy stunning view of the Singapore landscape from the 50th storey skybridge.



Next is a visit to **Tiong Bahru**, one of Singapore's oldest public housing estate built in the 1920s that has creatively evolved into a unique neighbourhood that balances heritage and swanky hipster lifestyle.



The **Tiong Bahru Market**, built in 1955, may be the first modern market to be built in a housing estate but still boasts some of the best hawker stalls for local culinary delights.



The 90-year-old **Qi Tian Gong Temple**, Singapore's oldest temple honours the **Monkey God**, who bestows blessing and protection.



A bakery where time stood still. With a history spanning four generations, **Galicier Pastry** is steeped in family tradition using only the freshest ingredients, bought daily, to create Galicier's traditional nyonya kuehs and retro cakes.



The design and décor of **Nostalgia Hotel** are inspired by Singapore's colonial years as well as the romantic history of the neighbourhood. After all, Tiong Bahru was once known as an area where the well-heeled kept their mistresses. It's 'old-world charm with a dash of modernism.



## Note:

- Includes touring in private transportation
- Min 2 pax to operate
- Food Sampling
- Markets will be substituted if closed for Spring Cleaning.

**PRICE: S\$168.00 per pax (min 2 pax)**

<i>Duration</i>	<i>Days of Operation</i>	<i>Start Time</i>
3.5 hours	Tuesday to Friday	9.15am

## UNIVERSAL STUDIOS SINGAPORE™

**FREE & EASY**



Go beyond the screen and **Ride The Movies™** at **Universal Studios Singapore™** at **Resorts World™ Sentosa**. Only here can you experience cutting-edge rides, shows, and attractions based on your favourite blockbuster films and television series, including **TRANSFORMERS The Ride: The Ultimate 3D Battle**, **Shrek 4-D Adventure**, **Revenge of the Mummy™**, **Madagascar: A Crate Adventure**, **Jurassic Park Rapids Adventure™**, and more! Plus the all-new **Puss In Boots' Giant Journey** and **Battlestar Galactica: HUMAN vs. CYLON™**, the world's tallest dueling coasters, are now open!



TRANSFORMERS The Ride: The Ultimate 3D Battle

*Daily*

<i>Universal Studios Singapore Ticket</i>	<i>Adult</i>	<i>Child (4-12)</i>
■ <b>One-Day Pass</b>	<b>S\$76.00</b>	<b>S\$56.00</b>
■ <b>One-Day Pass + One-Way Transfer*</b>	<b>S\$83.00</b>	<b>S\$62.00</b>

**Note:**

- Park operating hours are subjected to changes without prior notice, guest may visit [www.rwsentosa.com](http://www.rwsentosa.com) for updates prior.
- Attractions height requirements apply
- No refund, change of date allowed once ticket is issued.
- Island admission to Sentosa is chargeable at selected gateway.
- Days of Operation: Daily; Pick-Up Time: 8.30am
- Includes pick-up from city hotels to tour centre to Universal Studios Singapore (excludes Sentosa hotels)
- Excludes drop-off at hotel



Jurassic Park TM & © Universal Studios/Amblin Entertainment. All rights reserved. Shrek and Puss In Boots © 2015 DreamWorks Animation L.L.C. Sesame Street TM and associated characters, trademarks and design elements are owned and licensed by Sesame Workshop. © 2015 Sesame Workshop. All rights reserved. Battlestar Galactica TM Universal Studios. © Universal Network Television LLC. All rights reserved. TRANSFORMERS and its logo and all related characters are trademarks of Hasbro and are used with permission. © 2015 Hasbro. All Rights Reserved. © 2015 DreamWorks L.L.C. and Paramount Pictures Corporation. All Rights Reserved. Despicable Me and related characters are trademarks and copyrights of Universal Studios. Licensed by Universal Studios Licensing LLC. All Rights Reserved. UNIVERSAL STUDIOS, UNIVERSAL STUDIOS SINGAPORE, Universal Globe logo, and all Universal elements and related indicia TM & © Universal Studios. All Rights Reserved. © 2015 Genting International Management Limited. All rights reserved.

# S.E.A. AQUARIUM™

**FREE & EASY**

Discover the awe-inspiring world of life in the ocean at **S.E.A. Aquarium™** at **Resorts World Sentosa**, the world's largest aquarium. Explore more than 800 species of marine animals such as majestic manta rays and over 200 sharks through the world's largest window to the ocean.



Daily		
<i>S.E.A. Aquarium™ Ticket</i>	<i>Adult</i>	<i>Child (4-12)</i>
■ One-Day Pass	S\$39.00	S\$29.00
■ One-Day Pass + One-Way Transfer*	S\$44.00	S\$33.00

Daily		
<i>Combo - Universal Studios Singapore + S.E.A. Aquarium</i>	<i>Adult</i>	<i>Child (4-12)</i>
■ One-Day Pass	S\$110.00	S\$80.00
■ One-Day Pass + One-Way Transfer*	S\$115.00	S\$85.00

## ADVENTURE COVE WATERPARK™

**Thrilling slides and encounters with marine life - all in one place.** At Adventure Cove Waterpark, you can take high-speed water slides, laze the day away drifting on a lazy river, snorkel with 20,000 tropical fish over a colourful reef, wade among rays and even come face to face with sharks! Come have fun today! **Where the water's full of life.**



Daily		
<i>Adventure Cove Waterpark™ Ticket</i>	<i>Adult</i>	<i>Child (4-12)</i>
■ One-Day Pass	S\$38.00	S\$30.00
■ One-Day Pass + One-Way Transfer*	S\$45.00	S\$36.00

**Note:**

- No refund, change of date allowed once ticket is issued.
- Island admission to Sentosa is chargeable at selected gateway.
- Days of Operation: Daily; Pick-Up Time: 8.30am
- Includes pick-up from city hotels to tour centre to S.E.A. Aquarium™ / Adventure Cove Waterpark™ (excludes Sentosa hotels)
- Excludes drop-off at hotel



## GARDENS BY THE BAY



**FREE & EASY**

### Top 10 Indoor Gardens of the World

Featuring more than 1 million plants from more than 5,000 species, **Gardens by the Bay** is a must-see destination filled with wonders from around the world.

Marvel at the 35-metre tall indoor waterfall and stroll above the jungle canopy via aerial walkways at **Cloud Forest**. Replicating the cool and dry Mediterranean climate, **Flower Dome** showcases exotic plants from 5 continents in 9 different gardens. Watch as the Supertrees come alive with special effects at night. Come, be inspired by nature where wonder blooms.

**WORLD'S LARGEST GLASS GREENHOUSE**  
Flower Dome,  
Guinness World Record 2015

### Tulipmania (13 Apr - 13 May)

Be amazed by colourful tulips in a garden of magical burrows, multicoloured eggs and bunnies! Pop by and explore an imaginary world filled with whimsical possibilities.



### Begonia Brilliance (25 May - 1 Jul)

Imagine the future of gardening, as begonias bloom across an innovative display, inspired by a brilliant vision of architecture shaped by sustainability.



#### Note:

- Includes admission to two conservatories
- Includes option for OCBC Skyway
- Includes pick-up from city hotels to tour centre to Gardens by the Bay
- Excludes drop-off at hotel
- Refer to Gardens by the Bay website for conservatories closure dates: [www.gardenbythebay.com.sg](http://www.gardenbythebay.com.sg)
- Flower Dome will be closed for maintenance on: 10 Apr, 22 May and 19 Jun
- Cloud Forest will be closed for maintenance on: 09 Apr, 21 May and 18 Jun
- OCBC Skyway will be closed for maintenance on: 16 Apr, 14 May and 04 Jun



Admission to  
2 Conservatories

PRICE: S\$32.00 (ADULT) S\$19.00 (CHILD)

Includes option for  
OCBC Skyway

PRICE: S\$39.00 (ADULT) S\$24.00 (CHILD)

*Ticket Option*

*Days of Operation*

*Pick-Up Time*

Admission Ticket

Daily

8.30am



# LEGOLAND® MALAYSIA

**FREE &  
EASY**



**LEGOLAND Malaysia Resort** consists of a Theme Park, Water Park and Hotel. **THEME PARK:** LEGOLAND Malaysia is a full day **interactive family theme park**. The Park is divided into seven themed areas containing thrilling rides, exciting LEGO® workshops, and the awe-inspiring Miniland, where Asia's interesting landscapes, countries and landmarks are recreated in miniature using more than 30 million LEGO bricks. **WATER PARK:** This is the **biggest LEGOLAND Water Park** in the world that features slides, waves, wade pools, interactive water-play structure and Build-A-Raft River. Visitors can enjoy the Water Park on its own or in combination with the Theme Park. **HOTEL:** **LEGOLAND Hotel** promises to turn days into nights families will never forget. All 249 rooms are designed with LEGO theming, giving guests the choice of playing Pirate, commanding a Kingdom or embarking on an Adventure. LEGOLAND Malaysia Resort is open throughout the year.



#### Note:

- No refund for cancellation within 72 hours of tour date
- Tour duration includes travelling time for the return journey to Legoland, immigration and customs clearance.
- Please check if you need a visa to enter Malaysia and ensure that your passport has at least 6 months validity.
- Please bring along your Singapore Arrival Immigration Card (white card).
- At immigration, please disembark with your belongings and pass through passport control and customs, then re-board the coach.
- Includes pick-up from major city hotels to tour centre. Coach leaves from tour centre at 9.00am
- Excludes drop-off at hotel

**PRICE: S\$84.00 (ADULT) S\$72.00 (CHILD: 3-11)  
S\$72.00 (SENIOR CITIZEN: 60 & ABOVE)**

<i>Ticket Option</i>	<i>Days of Operation</i>	<i>Pick-Up Time</i>
Day Pass	Daily	8.00am

© The LEGOLAND trademark is a property of the LEGO Group and is used here with special permission.

## KIDZANIA SINGAPORE



At **KidZania Singapore**, children are free to be who they want to be!

Located at Palawan Beach on Sentosa, KidZania Singapore offers children real-life experiences through role-play activities in the kid-sized city. Children can learn to pilot an airplane, perform a surgery or whip up a meal as a chef! Through such diverse and interactive learning experiences, children can learn to develop valuable life skills such as responsibility, confidence and independence, that will help them follow their dreams and get ready for a better world!



**KidZania Singapore. Big dreams start here.**



### Note:

- Includes pick up from city hotels to tour center to KidZania Singapore (excludes Sentosa hotels)
- An Adult may enter KidZania Singapore only if accompanying a Kid.
- Kids aged below 8 years old must be accompanied and supervised at all times by an Adult.
- Kids aged 8 to 17 years are allowed to enter KidZania Singapore without being accompanied by an Adult, but the same Adult must be present during the Kids' check-in and check-out at KidZania Singapore.
- Temporary exits are not allowed for Kids at all times.
- Admission into KidZania Singapore is subject to operating hours and capacity limitations.
- Tour includes island admission into Sentosa.
- Days of Operation: Daily; Pick-Up Time: 8.30am

### Daily

KidZania Singapore Ticket	Adult	Kid (4-17)
<input type="checkbox"/> <b>One-Day Pass</b> (excludes Sentosa Island Admission)	<b>S\$35.00</b>	<b>S\$58.00</b>
<input type="checkbox"/> <b>One-Day Pass + One-Way Transfer*</b>	<b>S\$41.00</b>	<b>S\$63.00</b>

# TRICK EYE MUSEUM

**NEW**



Discover a world of **4D adventure** at Trick Eye Museum Singapore, an internationally renowned optical art museum from Korea which brings you closer to art through optical illusions.

With our huge array of **interactive art exhibits** specially hand-painted by our dedicated Korean artists, you will find yourself immersed in a world of

excitement and wonder. Using the 'Trompe l'oeil' art technique, our paintings will come alive before your very eyes.

Revel in the wonder of art through our **6 different themed zones** – step inside the paintings and complete a visual narrative with your creative poses. Through your camera lens, you become the director, choreographer and actor of your very own story.

**NEW!** Experience our new **Augmented Reality App**, an enhanced feature which allows you to interact with different augmented reality effects to take amazing photos and videos. Head on down for your picture-perfect shot today. **Trick Eye Museum, where 3D truly becomes 4D!**



**NEWEST ADDITION**

**AR FEATURES!**



**Note:**

- No refund, change of date allowed once ticket is issued.
- Island admission to Sentosa is chargeable at selected gateway.
- Includes pick-up from city hotels to tour centre to Trick Eye Museum (excludes Sentosa hotels)
- Excludes drop-off at hotel
- Days of Operation: Daily; Pick-Up Time: 8.30am

*Daily*

<i>Trick Eye Museum Ticket</i>	<i>Adult</i>	<i>Child (4-12)</i>
■ <b>One-Day Pass</b>	<b>S\$25.00</b>	<b>S\$20.00</b>
■ <b>One-Day Pass + One-Way Transfer*</b>	<b>S\$27.00</b>	<b>S\$22.00</b>

## MORNING @ SENTOSA

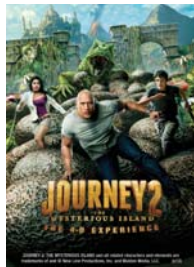
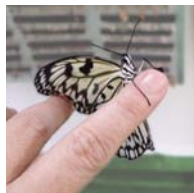
Catch a **Cable Car** ride from Mount Faber to the **State of FUN – SENTOSA!** The 8 seater cabins will give you a bird's eye view of the Singapore Skyline.

Enter a world of colours at the **Butterfly Park & Insect Kingdom** and allow 1,500 live butterflies – from over 50 species – to flutter about you. And if you are lucky, stroke the iguana while he is out at the deck to sunbathe.

Join Sean and the stars of **Journey to the Centre of the Earth**, as they embark on a one-of-a-kind adventure in Journey 2 – The Mysterious Island The 4D Adventure.

Then head to **Tiger Sky Tower**, to catch panoramic views across Singapore, Sentosa and the Southern Islands from Asia's tallest free standing observation tower.

Discover the awe-inspiring world of life in the ocean at **S.E.A. Aquarium™**, the world's largest aquarium. Explore more than 800 species of marine animals such as majestic manta rays and over 200 sharks through the world's largest window to the ocean.



Tour w/o S.E.A. Aquarium™		PRICE: S\$68.00 (ADULT)	S\$60.00 (CHILD)
Tour with S.E.A. Aquarium™		PRICE: S\$96.00 (ADULT)	S\$75.00 (CHILD)
Tour with Trick Eye Museum		PRICE: S\$90.00 (ADULT)	S\$75.00 (CHILD)
Duration	Days of Operation	Pick-Up Time	Start Time
4 hours	Daily	8.00am	8.30am

S.E.A. Aquarium™, Resorts World, the Resorts World logo and all Resorts World elements and related indicia™ & © Genting International Management Limited. All Rights Reserved.

# AFTERNOON TILL SUNSET @ SENTOSA

## Classic

Catch a **cable car ride** from Mount Faber to the State of FUN - SENTOSA!

Join Sean and the stars of **Journey to the Centre of the Earth**, as they embark on a one-of-a-kind adventure in Journey 2 - The Mysterious Island The 4D Adventure.

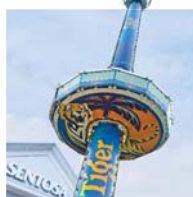
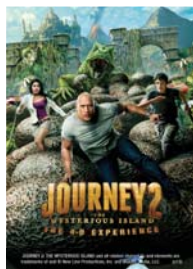
Then head to **Tiger Sky Tower**, to catch panoramic views across Singapore, Sentosa and the Southern Islands from Asia's tallest free standing observation tower.

Catch **Wings of Time**, a multi-sensory extravaganza show that tells the story of a fantastic journey through time and space.

## Classic PLUS

Enter a world of colours at the **Butterfly Park & Insect Kingdom** and allow 1,500 live butterflies – from over 50 species – to flutter about you. And if you are lucky, stroke the iguana while he is out at the deck to sunbathe.

Fun, interactive and theatrical, **Images of Singapore LIVE** takes you on a journey to uncover the nation's extraordinary story through a unique mix of live actors and special effects. Experience the sights, smells and sounds of yesteryear. Continue to **Madame Tussauds** where you will meet wax figures of celebrities and key historical personalities.



Classic		PRICE: S\$80.00 (ADULT) S\$70.00 (CHILD)	
Classic PLUS		PRICE: S\$105.00 (ADULT) S\$88.00 (CHILD)	
Duration	Days of Operation	Pick-Up Time	Start Time
6.5 hours	Daily	1.30pm	2.00pm

JOURNEY 2: THE MYSTERIOUS ISLAND and all related characters and elements are trademarks of and © New Line Productions, Inc. and Walden Media, LLC. (s15)

## SENTOSA FUN PASS (PLAY 5 PASS)

Enjoy a round-trip cable car ride plus any 5 of the below attractions!

- ☐ 4D AdventureLand: Desperados in 4D
- ☐ 4D AdventureLand: Extreme Log Ride
- ☐ 4D AdventureLand: Journey 2: The Mysterious Island
- ☐ Bi-Pedal Bicycle (2 Hours)
- ☐ Butterfly Park & Insect Kingdom
- ☐ MegaBounce or MegaJump @ Mega Adventure Park
  - ☐ MOSH!
  - ☐ Segway® Fun Ride (2 Rides)
  - ☐ Sentosa Merlion
- ☐ Skyline Luge Sentosa (1 Luge & 1 Skyride)
- ☐ Singapore Cable Car – Sentosa Line ONLY
- ☐ Tiger Sky Tower
- ☐ Trick Eye Museum Singapore
- ☐ Wave House Sentosa – Catch-A-Wave (1 Try)
- ☐ Wings of Time (Standard Seat)
- ☐ Madame Tussauds & IOS LIVE (2 - 1 Combo)
- ☐ S.E.A. Aquarium & K-Live Sentosa (2 - 1 Combo)



**Note:**

- Redemption at Imbiah Ticketing Counter
- Includes Island Admission to Sentosa
- No refund, change of date allowed once ticket is issued.
- Includes pick-up from city hotels to tour centre to Sentosa Island
- Excludes drop-off at hotel



**PRICE: S\$99.00 (ADULT) S\$82.00 (CHILD)**

<i>Ticket Option</i>	<i>Days of Operation</i>	<i>Pick-Up Time</i>
Sentosa Fun Pass + One-Way Transfer*	Daily (from 9am to 7pm or until closure of attractions, whichever is earlier)	8.00am 1.30pm

## SINGAPORE BY NIGHT

(WITH DINNER)



Enjoy a **delicious North Indian Buffet dinner** in the comfort of an air-conditioned restaurant.

Enroute to the world's largest fountain, take in the beautiful sight of the central business district via Benjamin Sheares Bridge.

Next, advance to **Bugis Street** or other night bazaars during festive period, where our guide will take you for a stroll at the night market or 'pasar malam' where you may chance upon bargains you never imagine.

Our last stop for the evening will be at **Smoke & Mirrors** for a taste of Singapore's very own concoction, 'the Singapore Sling', (included for those who have booked the tour with this option). Perched atop the iconic National Gallery Singapore, Smoke & Mirrors is a stylish cocktail bar with a spectacular panoramic view of Singapore's skyline. Offering imaginative progressive cocktails with bold and surprising flavours, Smoke & Mirrors is all about bringing the senses into enjoying every sip of your tittle.



### Note:

- Drinks during dinner are not included. Dinner venue is subject to change without prior notice.
- Type of drinks served for tour "With Singapore Sling" option:
  - Adults: Singapore Sling
  - 12 to 18 years old: Virgin Sling
  - Below 12 years old: Soft Drinks



*Tour w/o Singapore Sling* PRICE: S\$63.00 (ADULT) S\$40.00 (CHILD)

*Tour with Singapore Sling* PRICE: S\$96.00 (ADULT) S\$60.00 (CHILD)

Duration	Days of Operation	Pick-Up Time	Start Time
4 hours	Nightly (except Public Holidays)	6.00pm	6.30pm

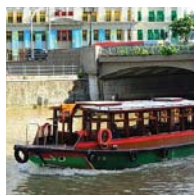
## NIGHTOUT @ CHINATOWN (WITH DINNER)

**Chinatown** has also come a long way since the early days when Chinese immigrants made this enclave their home. Filled with a sprawling myriad of shops and eateries, bustling with colourful and exciting activities set against a backdrop of rich history and heritage, Chinatown is not to be missed especially in the evening when everything really comes alive.

At a Chinese Medical Hall, learn how **Traditional Chinese Medicine** helps to regulate your **Yin and Yang**. From ancient days till modern times, the Chinese have continue with herbs and practices like acupuncture, moxibustion, tai chi and tui na to stay healthy.

After **dinner** at a local Chinese restaurant, wander along the narrow lanes of the Night Market and test your bargaining skills against street vendors selling anything from souvenirs to leather goods.

The highlight of the evening is a **trishaw ride** that takes you through the alleyways of Chinatown and down to Clarke Quay. There hop onto a **bumboat** for a cruise along the Singapore River to see Singapore lit up at night, showcasing beautifully restored shop houses, modern skyscrapers of the financial district, colonial buildings and the iconic Merlion statue.



### Note:

- Dinner is served between 8.00pm to 8.15pm. Drinks during dinner are not included. Tour operates with a minimum of 02 adults. Tour not available during Lunar New Year celebrations and Mid-Autumn Festival (Please check with our staff).
- Trishaw Ride is based on 'twin-sharing' basis.

**PRICE: S\$96.00 (ADULT) S\$72.00 (CHILD)**

Duration	Days of Operation	Pick-Up Time	Start Time
4 hours	Nightly (except Public Holidays)	6.00pm	6.30pm



# NIGHTOUT @ MARINA BAY



At **Gardens by the Bay**, discover exotic plants in the **FlowerDome** from the 5 continents which are displayed in 9 different gardens. Step into the Flower Dome and find the largest glass greenhouse in the world as listed in the 2015 Guinness World Records! Be amazed by the changing display of flowers and plants from the Mediterranean and semi-arid regions.

Walk in the **Cloud Forest** and marvel at the 35-metre tall indoor waterfall, a mysterious world veiled in mist with and be amazed at the unique and fragile plants. Take in breath-taking mountain views surrounded by diverse vegetation and hidden floral gems. And learn about rare plants and their fast-disappearing environment.

Watch the **SuperTree Grove** come alive with an exhilarating display of light and sound at night!

Be amazed with a birds-eye view of the city from the top of **Marina Bay Sands' SkyPark** – it is a roof like no other, perched 200 metres in the air with observation deck in the clouds.



## Note:

- Includes admission to two conservatories
- Includes \$5.00 dining voucher to be used at the SuperTree Dining outlets
- Excludes admission to OCBC Skyway
- Includes Marina Bay Sands' SkyPark admission (Weather permitting)

**PRICE: S\$82.00 (ADULT) S\$54.00 (CHILD)**

<i>Duration</i>	<i>Days of Operation</i>	<i>Pick-Up Time</i>	<i>Start Time</i>
4 hours	Wednesday, Friday, Sunday (except Public Holidays)	6.00pm	6.30pm

## CABLE CAR SKY DINING



Commence the **Sky Dining** experience on **Faber Peak Singapore**, located 100 metres above the sea, which features **cable car joyrides**, and a vibrant cluster of dining and entertainment amidst the relaxing lush greenery!

Cosy up in your very own **private cable car cabin** and savour a delicious 4-course meal, as you take in the lights and splendour of **Singapore's cityscape** set against the romantic night skies with **Sky Dining**.



### Note:

- Dinner is served on the cable car ride (3 round trips) between Mount Faber and Sentosa. 30 minutes per round trip.
- Tour may not operate under adverse weather and dinner may be served at the Faber Peak outlets. No refunds will be entertained.
- No refund for cancellation within 72 hours from Sky Dining booking date
- Excludes hotel pick-up/drop off

*Sky Dining – Dinner* **PRICE: S\$169.00 per pax (min 2 pax)**

<i>Duration</i>	<i>Days of Operation</i>	<i>Boarding Time</i>	<i>Departs From</i>
1.5 hours	Daily	6.00pm to 7.00pm	Faber Peak (Mount Faber)

# HERITAGE FOOD DELICIOUS

Serving up a true melting pot of flavours and food, Singapore's cultural diversity is reflected through the array of local cuisines comprising **Chinese, Malay, Indian** and **Peranakan**.

The bustling **Geylang Serai market** lies at the heart of the Malay community and features predominately Malay and Indian cuisine. The famous market has a wet section selling fresh produce, from live fish to spices, and a food centre on the upper level. Enjoy all time Singaporean favourites like **Roti Prata** and **Thosai** taken with a frothy glass of **Teh Tarik**.

Traditionally associated with the Peranakan and Eurasian communities, the **Joo Chiat/Katong** enclave is a treasure trove rich in history and picture-perfect architecture of pre-war shophouses. To Singaporeans this neighborhood is home to the famous **Laksa, Ondeh-ondoh** and other delicacies.

And, if you're lucky, you'll get to watch **popiah masters** standing over hot griddles twirling dollops of dough in mid-air to make those paper thin wrappers for fresh spring rolls.



## Note:

- Includes touring in private transportation
- Min 2 pax to operate
- Food Sampling
- Markets will be substituted if closed for Spring Cleaning.

**PRICE: S\$168.00 per pax (min 2 pax)**

<i>Duration</i>	<i>Days of Operation</i>	<i>Start Time</i>
3.5 hours	Tuesday to Friday	9.15am



## TOUR CONDITIONS

---

The Contents of this brochure are correct at the time of printing but all prices, services and itineraries described herein are subject to change or withdrawal, without prior notice.

Please have exact change available when making payment directly to our staff. Major credit cards are acceptable. All prices are inclusive of 7% GST, tickets sold and issued are non-refundable.

All arrangements, for the provisions of transport and other services are made by **Tour East Singapore (1996) Pte Ltd**, operated in conjunction with **Destination Services Singapore**, as agent only and neither this company nor any person assisting or collaborating with it is liable for any loss, injury, accident, damage or delay which may occur during the tour.

A 100% cancellation fee will apply for tours cancelled within 24 hours prior to tour departure. Depending on traffic conditions, duration of tour may vary.

Every person participating in the tour organised by the Company shall be regarded in every respect as carrying his own risk with regards to loss or injury, to person or property. The Company does not accept responsibility for losses or expenses incurred due to delay, sickness, weather, strikes, war or other causes. Such losses and expenses being the responsibility of the traveller.

All tours operate with a minimum of 02 adults, unless otherwise stated.

**Note:** Child price applies for 3 to 12 years old inclusive, unless otherwise stated.

## PICK-UP SERVICES

---

We offer pick-up service from major hotels to a coordination centre. At the end of the tour, we also offer a drop-off service, unless otherwise specified, to a point near your hotel, not necessarily at the doorstep.

Pick-up begins 30 minutes prior to tour starting time and we recommend you to be ready 5 minutes before the given time.

All tours, except Free & Easy, are fully escorted by professional tour guides and are operated on a free seating basis in luxury air-conditioned coaches or mini buses.

For the purpose of easy identification, please wear the sticker issued with your tour ticket.

## Destination Services Singapore

101 Thomson Road  
#26-02 United Square  
Singapore 307591

Tour Hotline Telephone Number: 6330 6860

After Office Hour: 9023 6050 (Mobile)

Office Hours:

Mon - Fri 0900hrs - 1800hrs

Saturday 0900hrs - 1300hrs